

BYLAW 40-2009

(CONSOLIDATED October 29, 2019)

A BYLAW OF STRATHCONA COUNTY IN THE PROVINCE OF ALBERTA FOR THE PURPOSE OF DEFINING THE RURAL HAMLET BOUNDARIES.

WHEREAS, the Municipal Government Act, RSA 2000, c.M-26, and regulations made thereunder, provide that a Municipality may enact a Bylaw for the purpose of defining the hamlet boundaries of unincorporated communities within its boundaries; and

WHEREAS, it is deemed desirable to identify the rural hamlet boundaries of Antler Lake, Ardrossan, Collingwood Cove, Half Moon Lake, Hastings Lake, Josephburg, North Cooking Lake and South Cooking Lake;

NOW THEREFORE, the Council of Strathcona County, duly assembled, hereby enacts as follows:

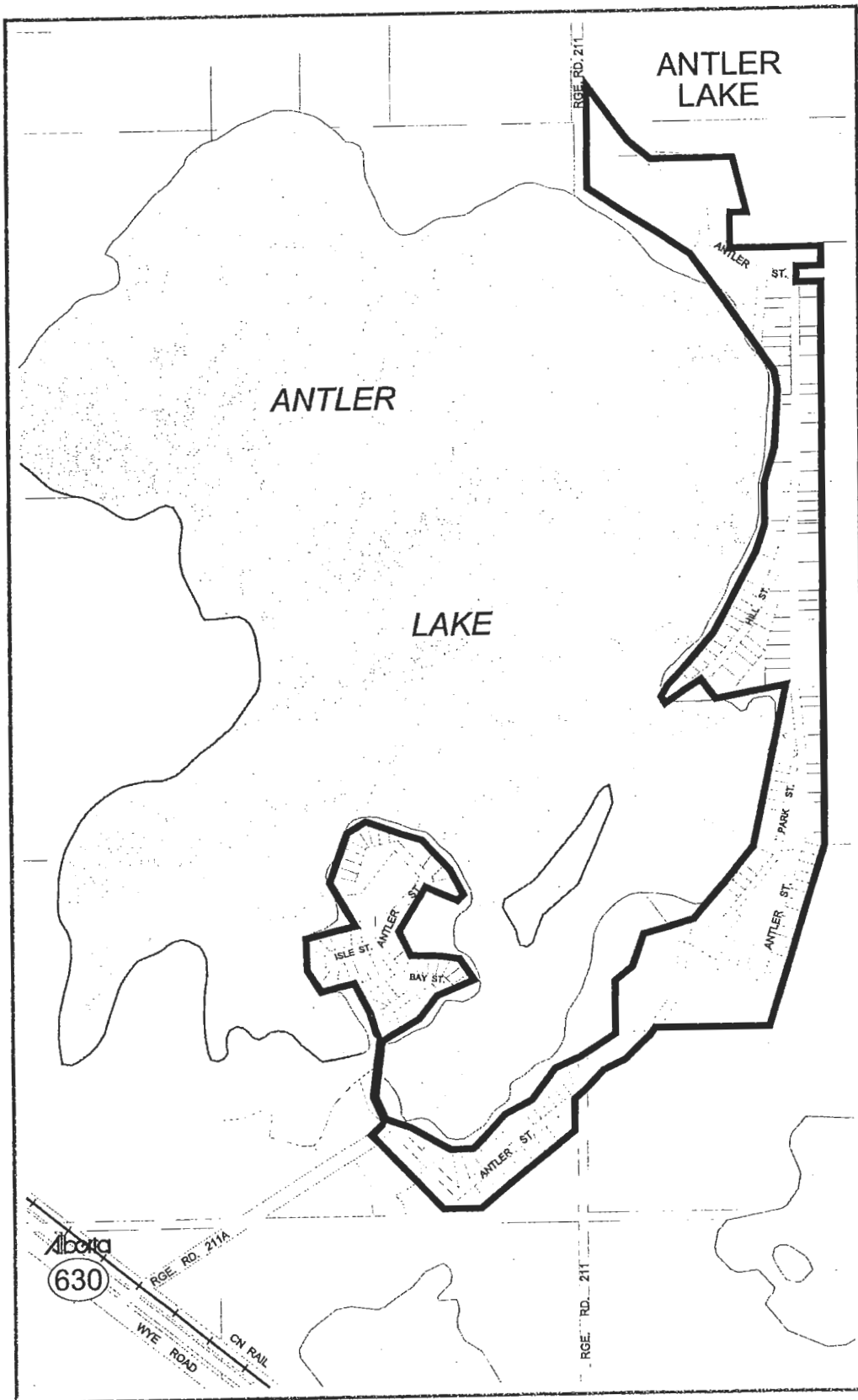
1. That the rural hamlet boundaries be adopted, as outlined on Schedule "A" attached hereto.
2. This bylaw comes into effect after third reading and upon being signed.

NOTE: Consolidation made under Section 69 of the Municipal Government Act, R.S.A. 2000, c.M-26 and Bylaw 21-2015 Section 8, and printed under the Chief Commissioner's authority.

Bylaw 40-2009, passed by Council June 30, 2009

Amendments

Bylaw 40-2013, August 27, 2013
Bylaw 30-2019, October 29, 2019



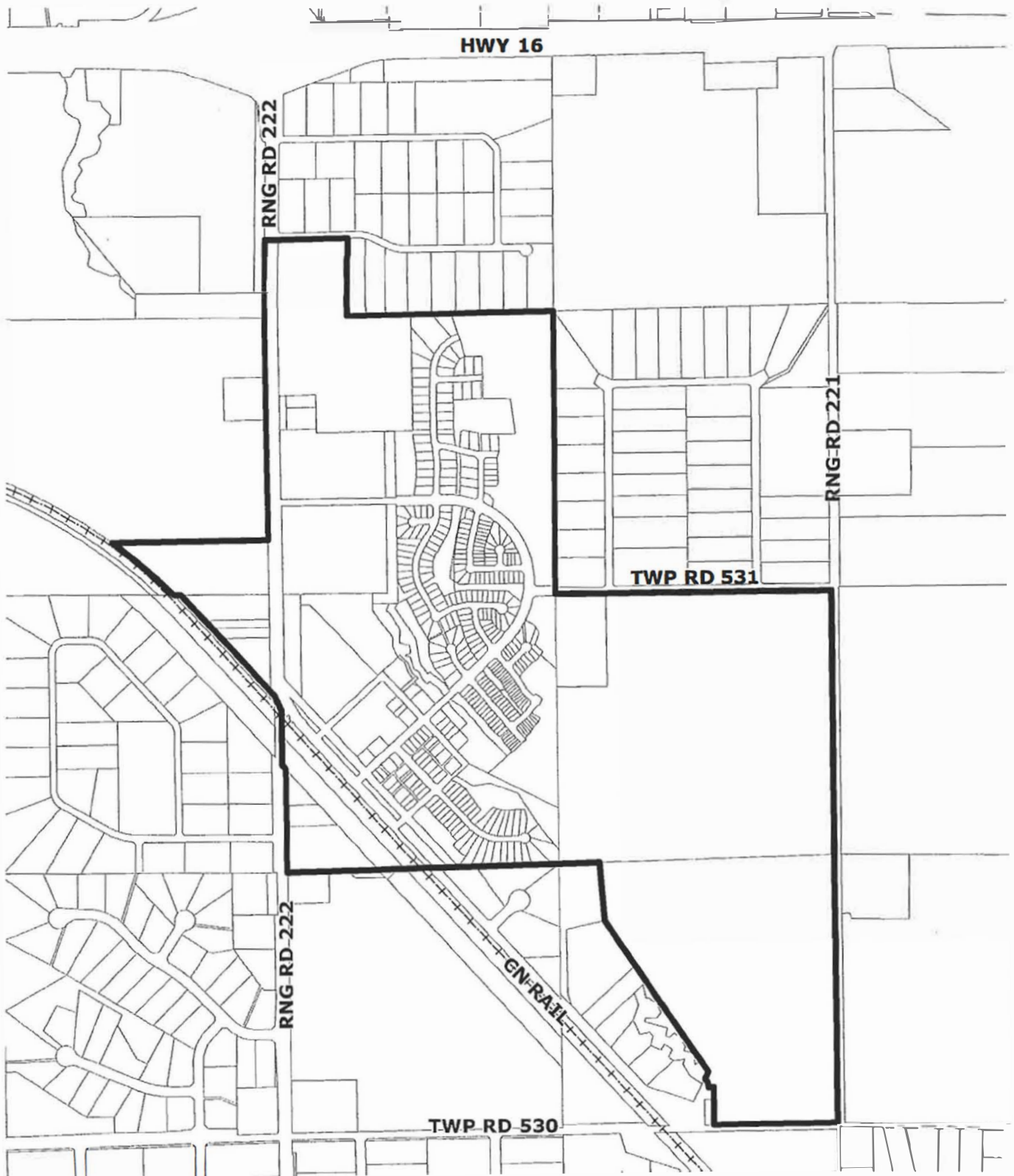
Strathcona
County

■ Hamlet Boundary

Antler Lake

W 1/2 13-52-21-W4
E 1/2 14-52-21-W4
SW 24-52-21-W4





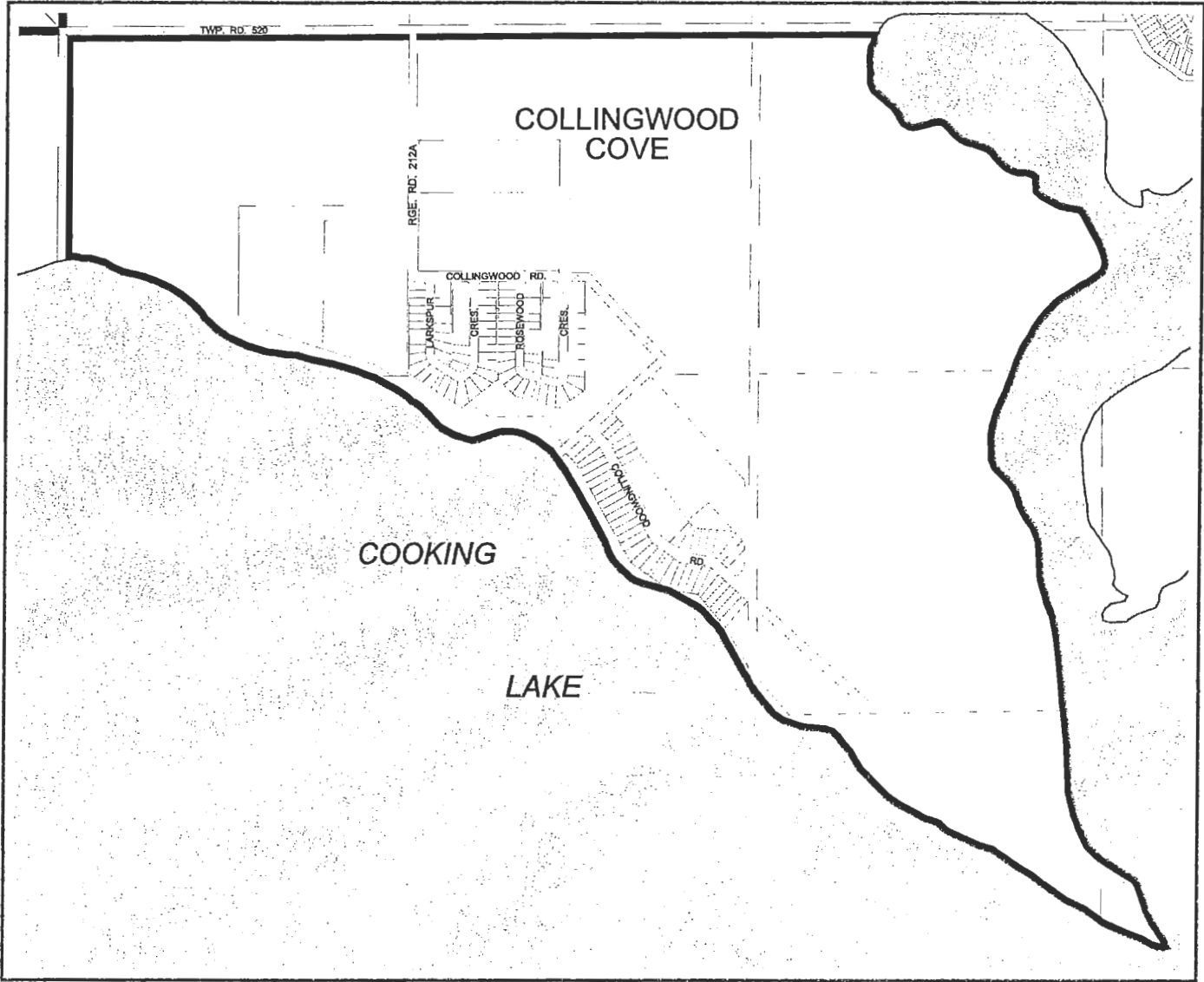
ARDROSSAN



 **HAMLET BOUNDARY**

- SW 11-53-22-W4
- NW 2-53-22-W4
- NE 2-53-22-W4
- Part of NW 11-53-22-W4
- Part of SE 10-53-22-W4
- Part of NE 3-53-22-W4
- Part of SE 2-53-22-W4





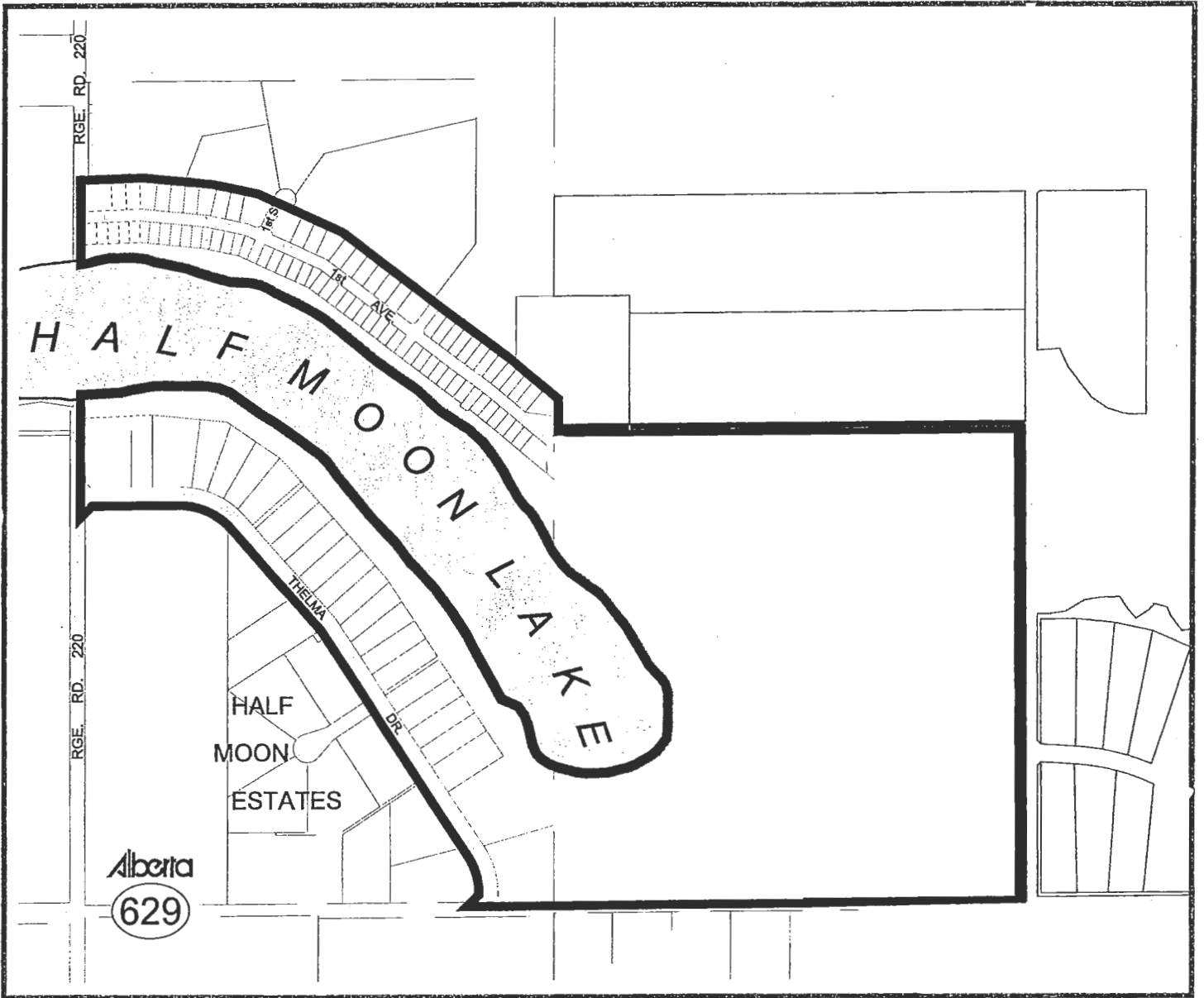
Strathcona
County

Collingwood Cove

— Hamlet Boundary

NW 26-51-21-W4
N 1/2 34-51-21-W4
SE 34-51-21-W4
W 1/2 35-51-21-W4





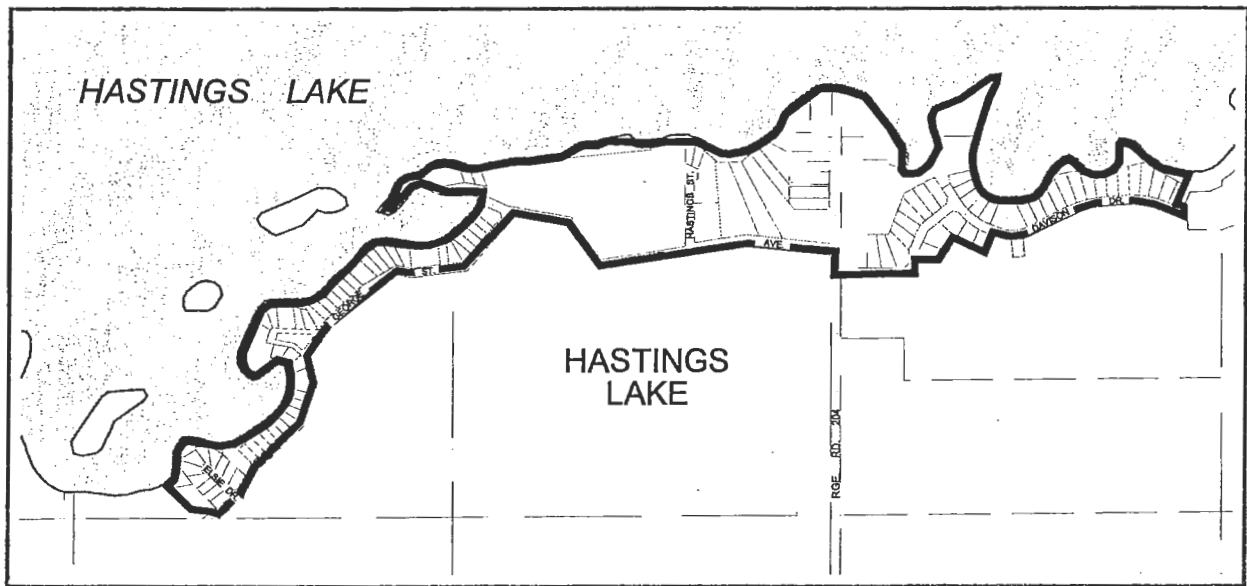
Strathcona
County

— Hamlet Boundary

Half Moon Lake

W 1/2 6-52-21-W4
SE 6-52-21-W4



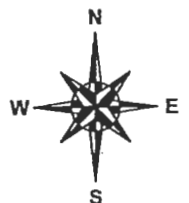


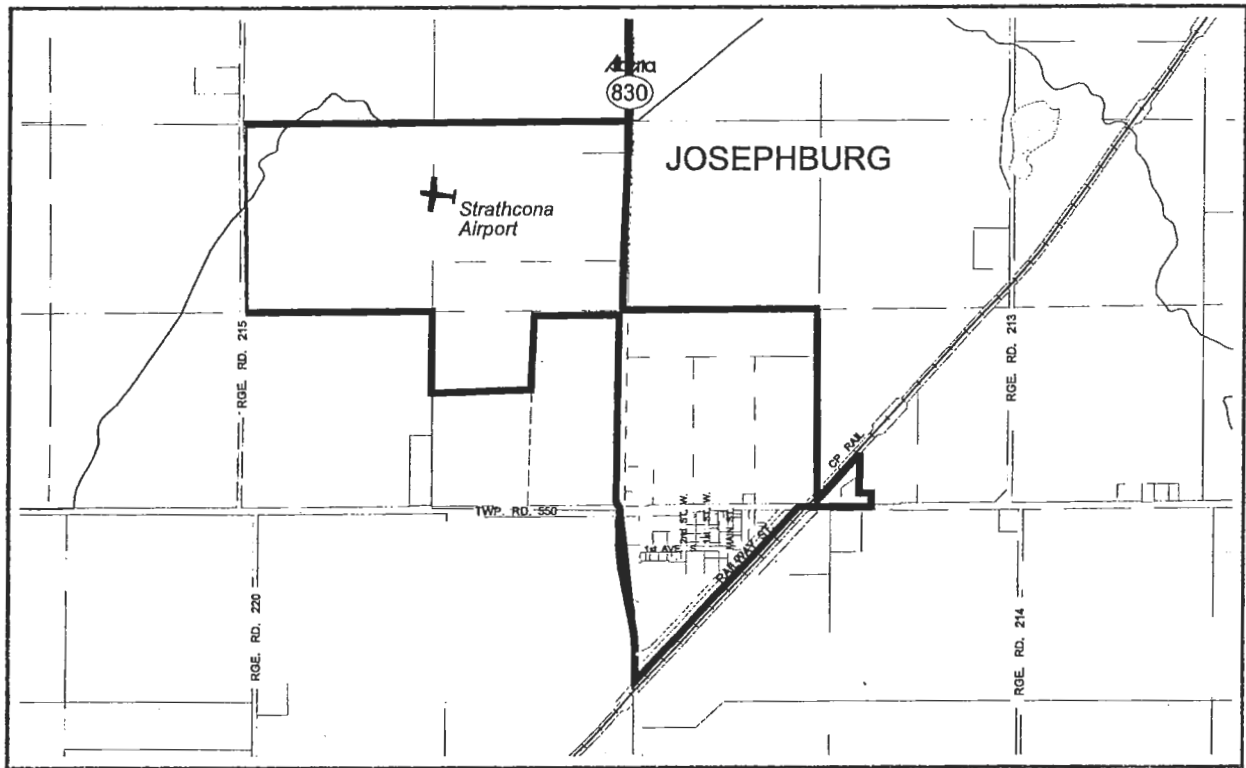
Strathcona
County

— Hamlet Boundary

Hastings Lake

NW 16-51-20-W4 SW 21-51-20-W4
N 1/2 17-51-20-W4
SE 20-51-20-W4





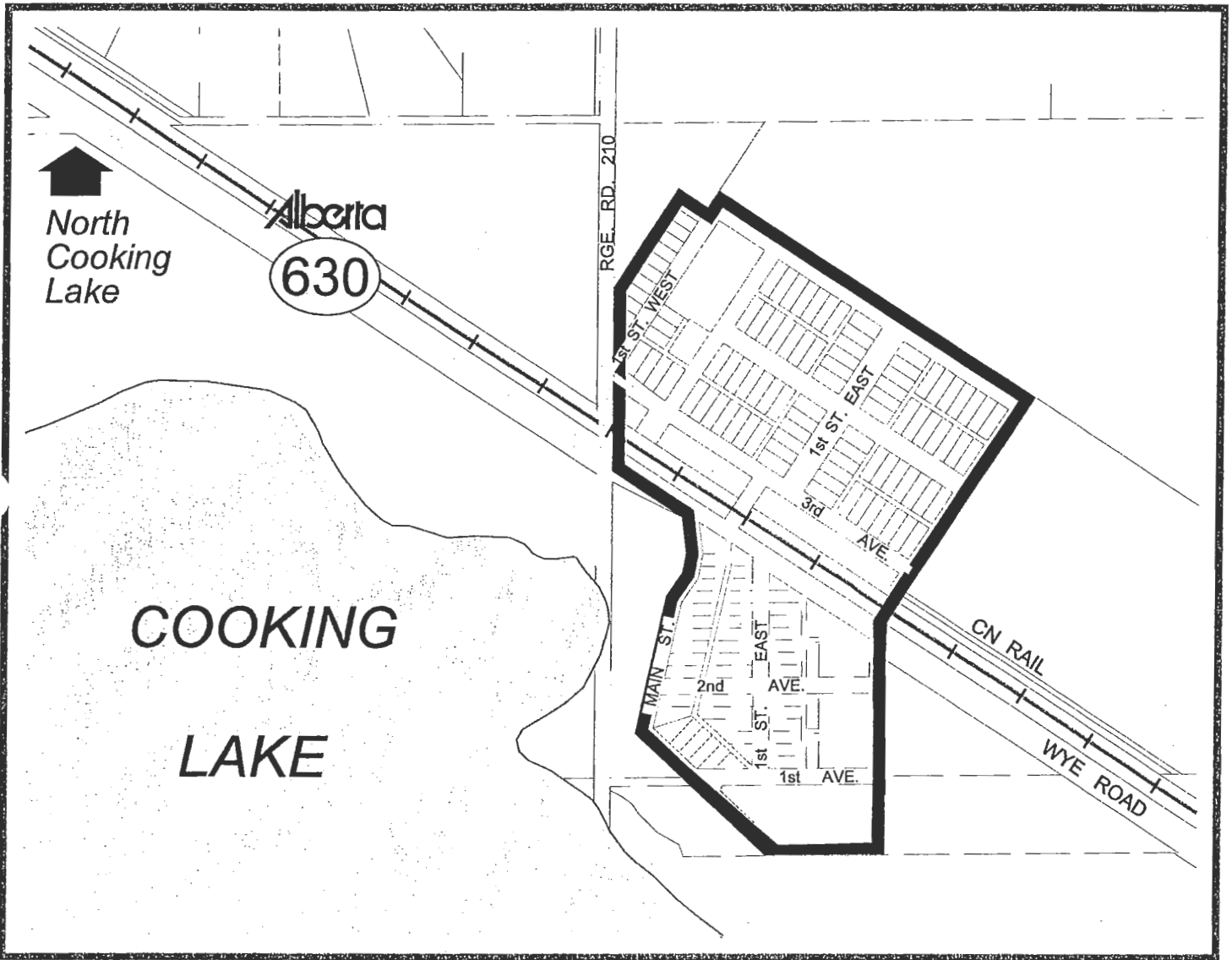
Strathcona
County

— Hamlet Boundary

Josephburg

S 1/2 4-55-21-W4
N 1/2 5-55-21-W4
SE 5-55-21-W4
NW 32-54-21-W4





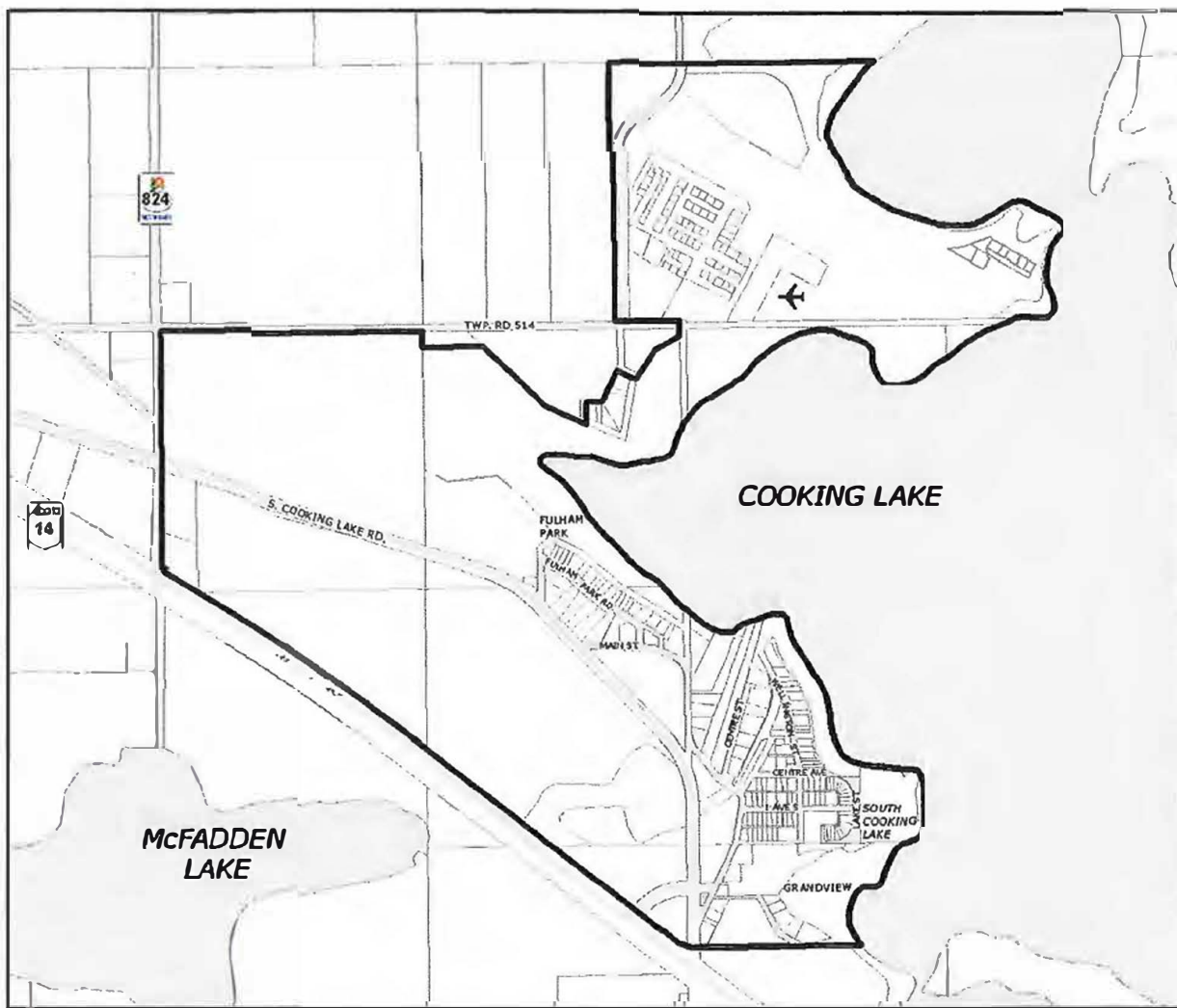
Strathcona
County

North Cooking Lake

— Hamlet Boundary

W 1/2 6-52-20-W4





 STRATHCONA COUNTY
— Hamlet Boundary

South Cooking Lake

NW 13-51-22-W4
NE 14-51-22-W4
SECTION 23-51-22-W4
SW 24-51-22-W4
SE 26-51-22-W4
SW 25-51-22-W4
SE 25-51-22-W4



(S.1, Bylaw 40-2013, August 27, 2013)