

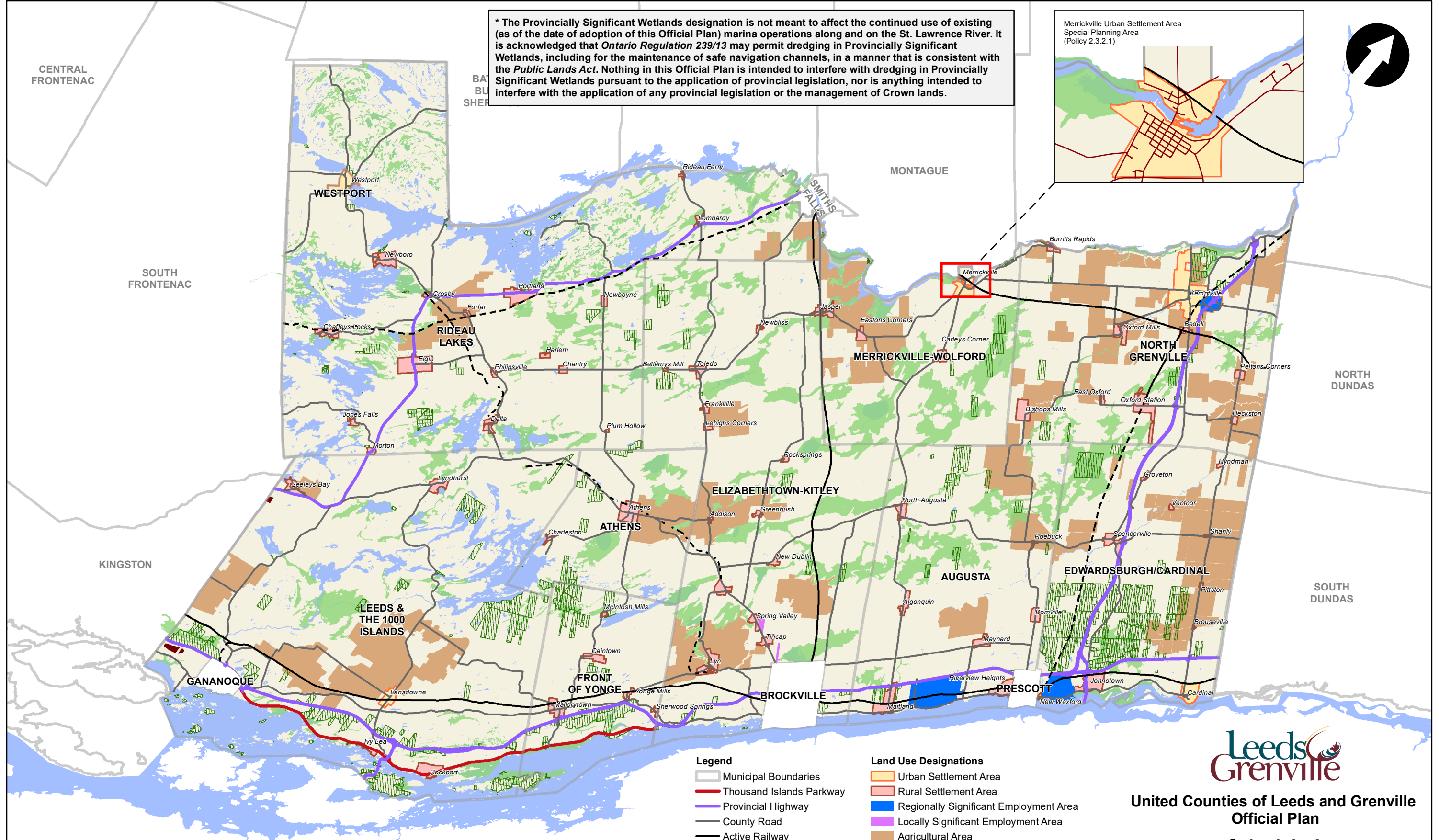
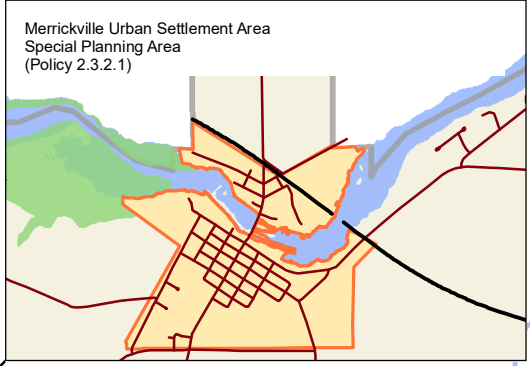
# Leeds Greenville



## Official Plan Schedules

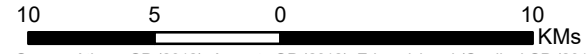
Office Consolidation: September 1, 2022

\* The Provincially Significant Wetlands designation is not meant to affect the continued use of existing (as of the date of adoption of this Official Plan) marina operations along and on the St. Lawrence River. It is acknowledged that *Ontario Regulation 239/13* may permit dredging in Provincially Significant Wetlands, including for the maintenance of safe navigation channels, in a manner that is consistent with the *Public Lands Act*. Nothing in this Official Plan is intended to interfere with dredging in Provincially Significant Wetlands pursuant to the application of provincial legislation, nor is anything intended to interfere with the application of any provincial legislation or the management of Crown lands.



- Legend**
- Municipal Boundaries
  - Thousand Islands Parkway
  - Provincial Highway
  - County Road
  - Active Railway
  - Abandoned Railway
  - Crown Lands
- Land Use Designations**
- Urban Settlement Area
  - Rural Settlement Area
  - Regionally Significant Employment Area
  - Locally Significant Employment Area
  - Agricultural Area
  - Rural Lands
  - Specific Resource - Wollastonite
  - Provincially Significant Wetlands

This Schedule forms part of the Official Plan and must be read and interpreted in conjunction with the other Schedules and the text of this Plan.



Source: Athens OP (2012), Augusta OP (2012), Edwardsburgh/Cardinal OP (2011), Elizabethtown-Kitley OP (2006), Front of Yonge OP (2006), Leeds and the Thousand Islands OP (2006), Merrickville-Wolford OP (2008), North Grenville OP (2010), Rideau Lakes OP (2004), Westport OP (2008), Land Information Ontario, United Counties of Leeds and Grenville, © Queen's Printer for Ontario



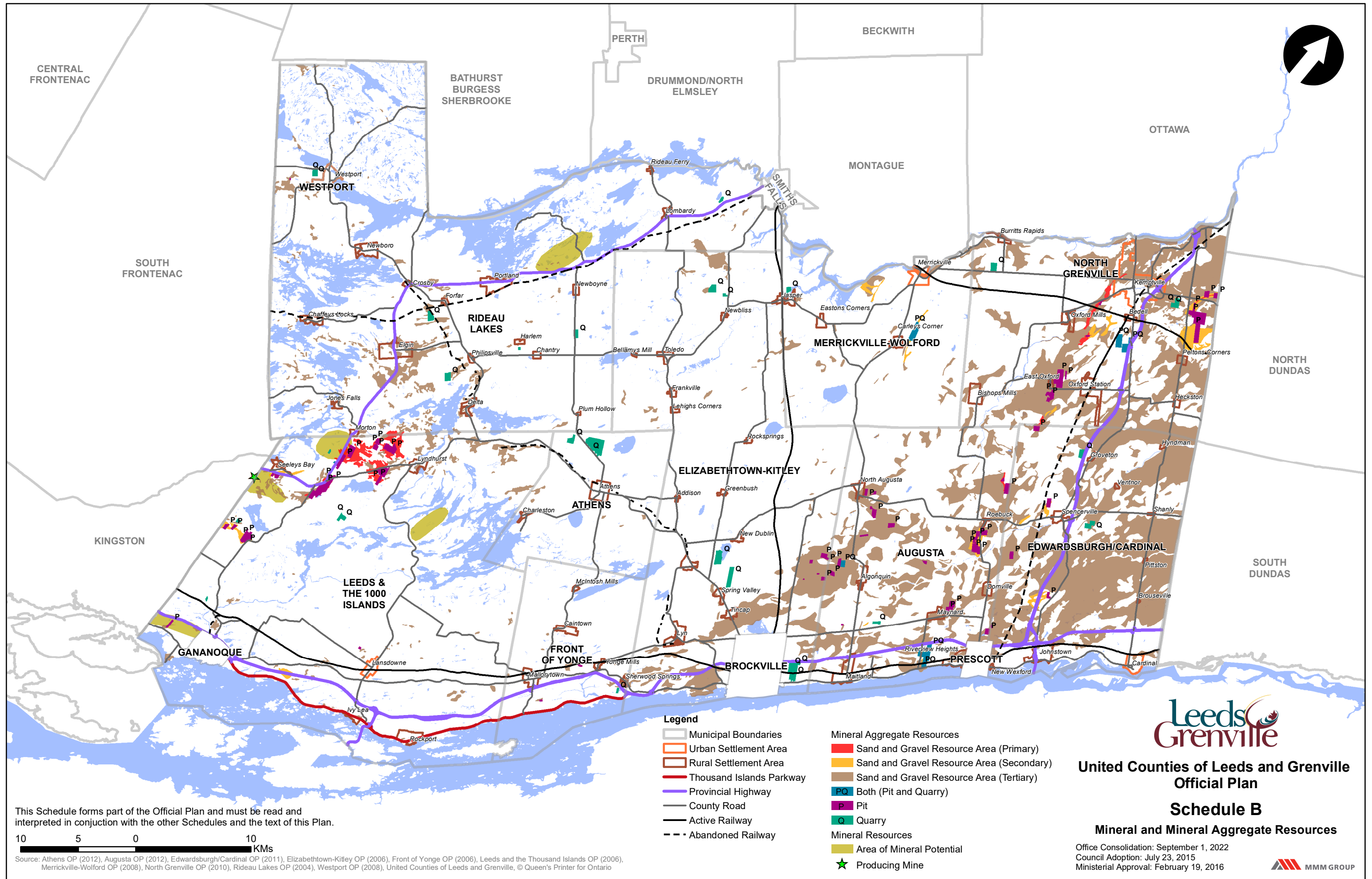
**United Counties of Leeds and Grenville  
Official Plan**

**Schedule A**

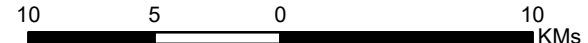
**Community Structure and Land Use**

Office Consolidation: September 1, 2022  
Council Adoption: July 23, 2015  
Ministerial Approval: February 19, 2016





This Schedule forms part of the Official Plan and must be read and interpreted in conjunction with the other Schedules and the text of this Plan.



Source: Athens OP (2012), Augusta OP (2012), Edwardsburgh/Cardinal OP (2011), Elizabethtown-Kitley OP (2006), Front of Yonge OP (2006), Leeds and the Thousand Islands OP (2006), Merrickville-Wolford OP (2008), North Grenville OP (2010), Rideau Lakes OP (2004), Westport OP (2008), United Counties of Leeds and Grenville, © Queen's Printer for Ontario

**Legend**

- Municipal Boundaries
- Urban Settlement Area
- Rural Settlement Area
- Thousand Islands Parkway
- Provincial Highway
- County Road
- Active Railway
- Abandoned Railway

**Mineral Aggregate Resources**

- Sand and Gravel Resource Area (Primary)
- Sand and Gravel Resource Area (Secondary)
- Sand and Gravel Resource Area (Tertiary)
- Both (Pit and Quarry)
- Pit
- Quarry

**Mineral Resources**

- Area of Mineral Potential
- Producing Mine



**United Counties of Leeds and Grenville  
Official Plan**

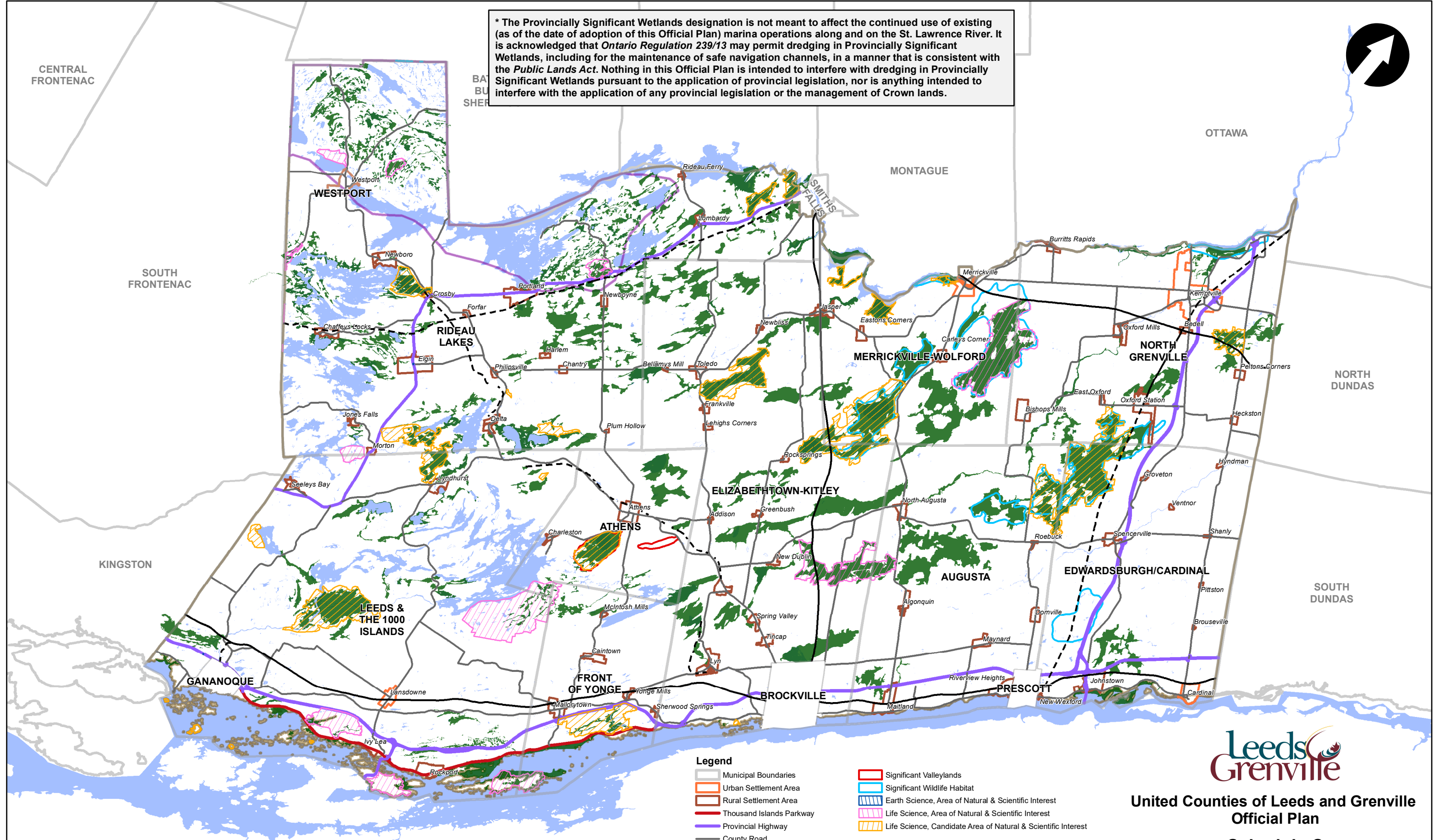
**Schedule B**

**Mineral and Mineral Aggregate Resources**

Office Consolidation: September 1, 2022  
Council Adoption: July 23, 2015  
Ministerial Approval: February 19, 2016



\* The Provincially Significant Wetlands designation is not meant to affect the continued use of existing (as of the date of adoption of this Official Plan) marina operations along and on the St. Lawrence River. It is acknowledged that *Ontario Regulation 239/13* may permit dredging in Provincially Significant Wetlands, including for the maintenance of safe navigation channels, in a manner that is consistent with the *Public Lands Act*. Nothing in this Official Plan is intended to interfere with dredging in Provincially Significant Wetlands pursuant to the application of provincial legislation, nor is anything intended to interfere with the application of any provincial legislation or the management of Crown lands.



- Legend**
- Municipal Boundaries
  - Urban Settlement Area
  - Rural Settlement Area
  - Thousand Islands Parkway
  - Provincial Highway
  - County Road
  - Natural Heritage Features and Areas
  - Provincially Significant Wetlands \*
  - Significant Valleylands
  - Significant Wildlife Habitat
  - Earth Science, Area of Natural & Scientific Interest
  - Life Science, Area of Natural & Scientific Interest
  - Life Science, Candidate Area of Natural & Scientific Interest

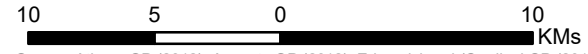


**United Counties of Leeds and Grenville  
Official Plan**

**Schedule C**

**Natural Heritage Features and Areas**

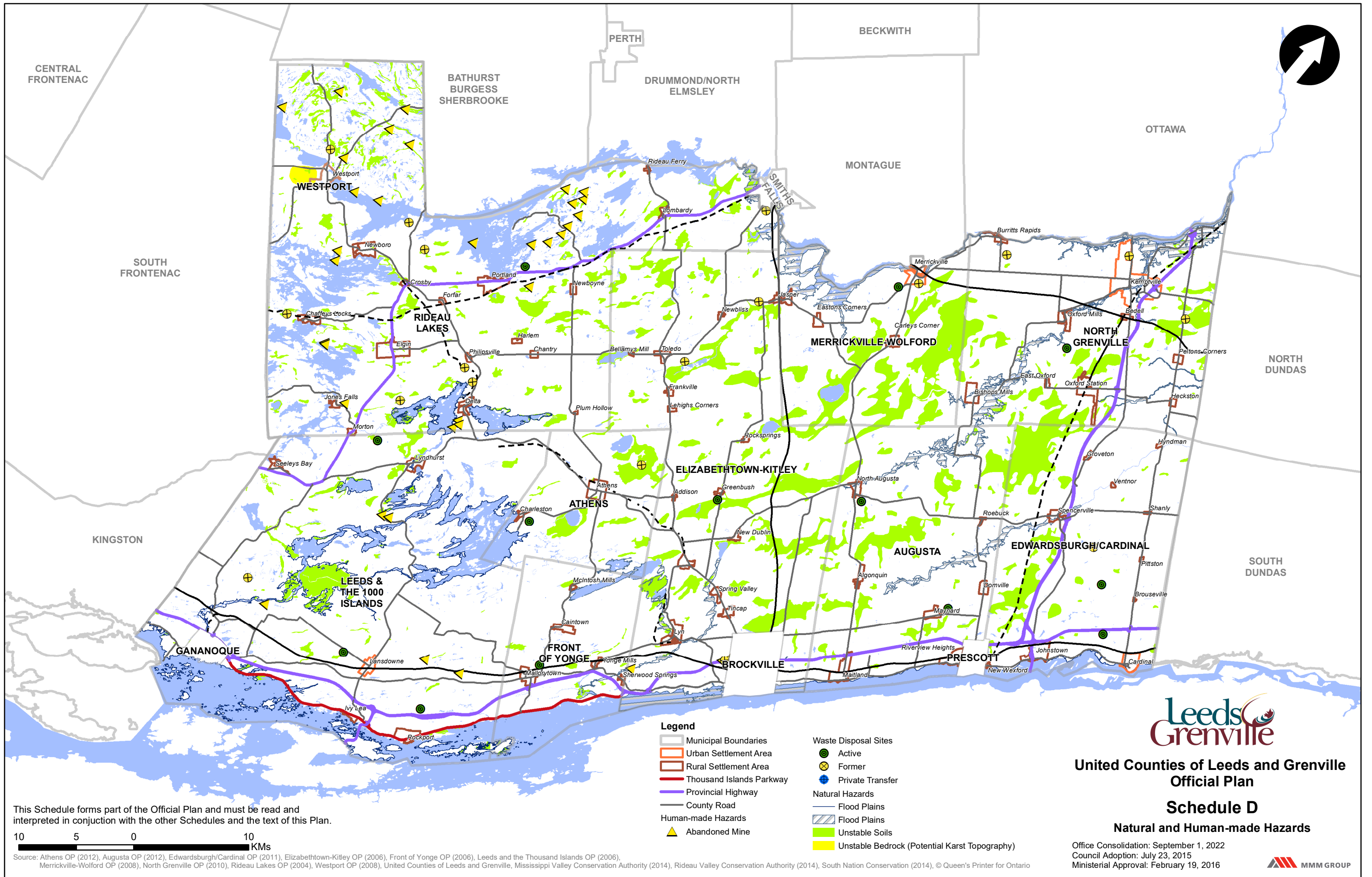
This Schedule forms part of the Official Plan and must be read and interpreted in conjunction with the other Schedules and the text of this Plan.



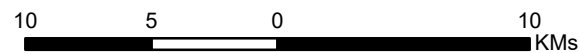
Source: Athens OP (2012), Augusta OP (2012), Edwardsburgh/Cardinal OP (2011), Elizabethtown-Kitley OP (2006), Front of Yonge OP (2006), Leeds and the Thousand Islands OP (2006), Merrickville-Wolford OP (2008), North Grenville OP (2010), Rideau Lakes OP (2004), Westport OP (2008), Land Information Ontario, United Counties of Leeds and Grenville, © Queen's Printer for Ontario

Office Consolidation: September 1, 2022  
Council Adoption: July 23, 2015  
Ministerial Approval: February 19, 2016





This Schedule forms part of the Official Plan and must be read and interpreted in conjunction with the other Schedules and the text of this Plan.



Source: Athens OP (2012), Augusta OP (2012), Edwardsburgh/Cardinal OP (2011), Elizabethtown-Kitley OP (2006), Front of Yonge OP (2006), Leeds and the Thousand Islands OP (2006), Merrickville-Wolford OP (2008), North Grenville OP (2010), Rideau Lakes OP (2004), Westport OP (2008), United Counties of Leeds and Grenville, Mississippi Valley Conservation Authority (2014), Rideau Valley Conservation Authority (2014), South Nation Conservation (2014), © Queen's Printer for Ontario

**Legend**

- Municipal Boundaries
- Urban Settlement Area
- Rural Settlement Area
- Thousand Islands Parkway
- Provincial Highway
- County Road
- Abandoned Mine
- Waste Disposal Sites - Active
- Waste Disposal Sites - Former
- Private Transfer
- Natural Hazards**
- Flood Plains
- Flood Plains
- Unstable Soils
- Unstable Bedrock (Potential Karst Topography)



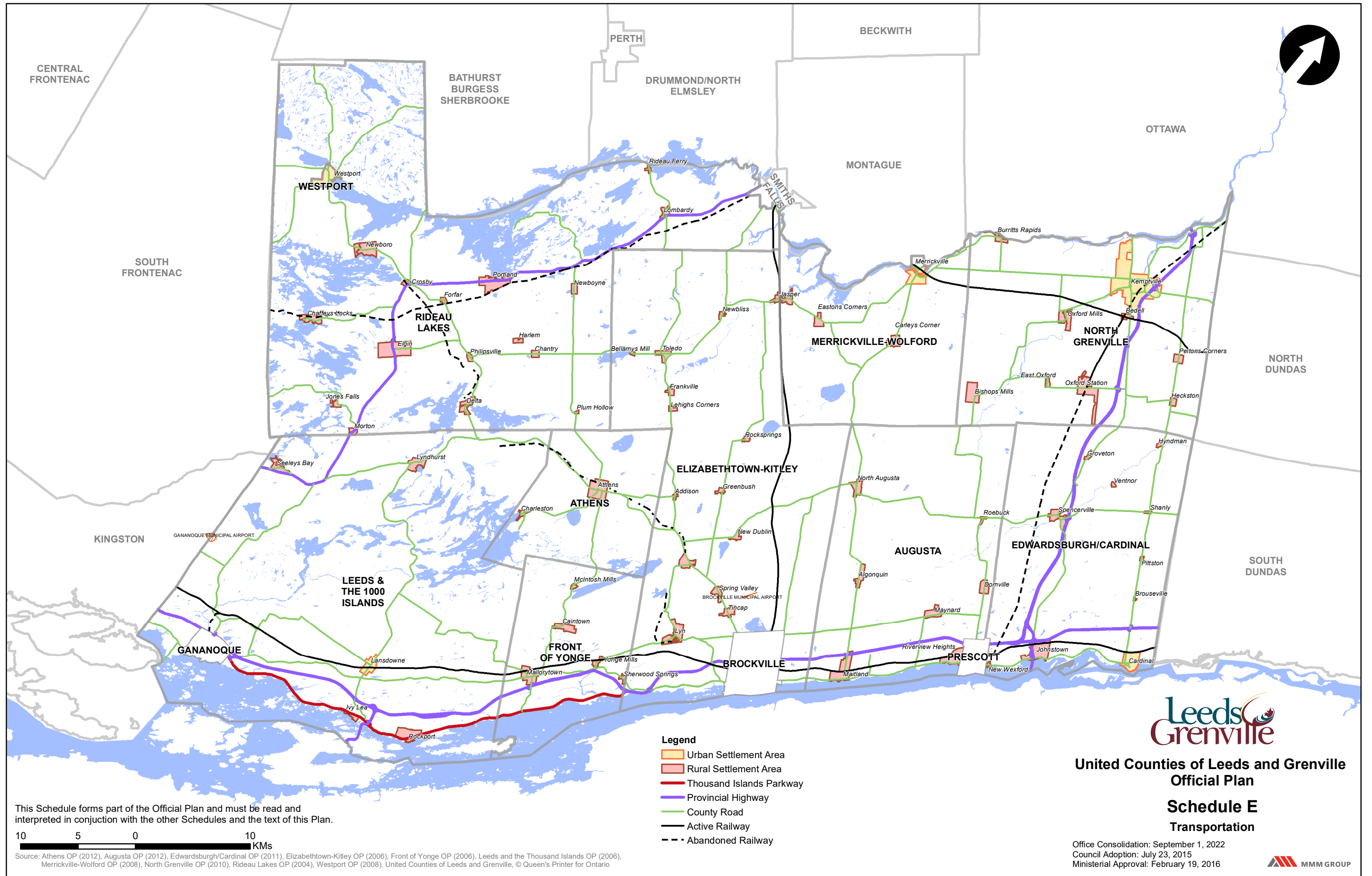
**United Counties of Leeds and Grenville  
Official Plan**

**Schedule D**

**Natural and Human-made Hazards**

Office Consolidation: September 1, 2022  
Council Adoption: July 23, 2015  
Ministerial Approval: February 19, 2016





This Schedule forms part of the Official Plan and must be read and interpreted in conjunction with the other Schedules and the text of this Plan.

10 5 0 10  
KMs

Source: Athens OP (2012), Augusta OP (2012), Edwardsburgh/Cardinal OP (2011), Elizabethtown-Kitley OP (2006), Front of Yonge OP (2006), Leeds and the Thousand Islands OP (2006), Merrickville-Wolford OP (2008), North Grenville OP (2010), Rideau Lakes OP (2004), Westport OP (2008), United Counties of Leeds and Grenville, © Queen's Printer for Ontario



**United Counties of Leeds and Grenville  
Official Plan**

**Schedule E  
Transportation**

Office Consolidation: September 1, 2022  
Council Adoption: July 23, 2015  
Ministerial Approval: February 19, 2016

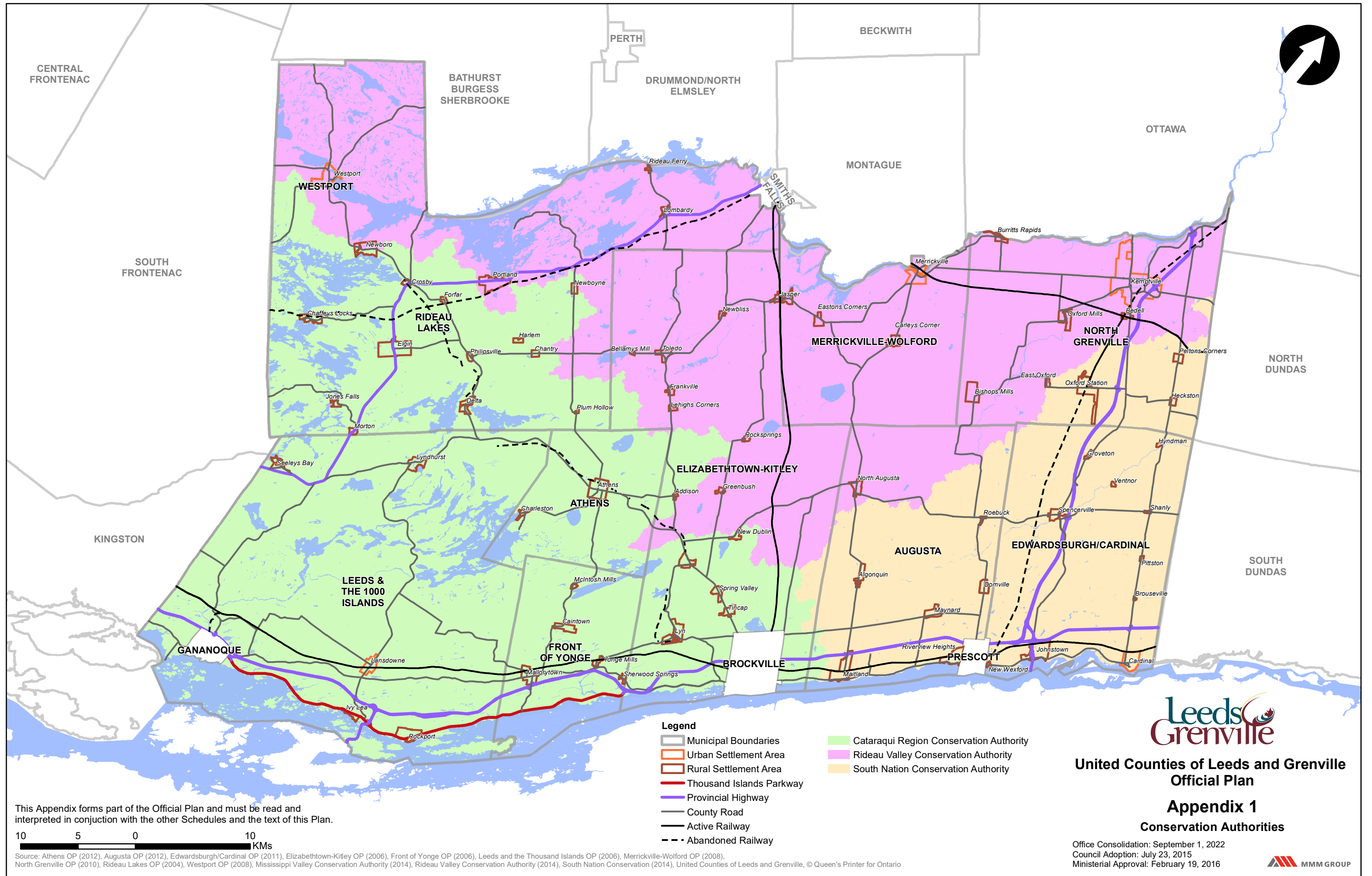


# Leeds Greenville



## Official Plan Appendices

Office Consolidation: September 1, 2022



This Appendix forms part of the Official Plan and must be read and interpreted in conjunction with the other Schedules and the text of this Plan.

10 5 0 10  
KMs

Source: Athens OP (2012), Augusta OP (2012), Edwardsburgh/Cardinal OP (2011), Elizabethtown-Kitley OP (2006), Front of Yonge OP (2006), Leeds and the Thousand Islands OP (2006), Merrickville-Wolford OP (2008), North Grenville OP (2010), Rideau Lakes OP (2004), Westport OP (2008), Mississippi Valley Conservation Authority (2014), Rideau Valley Conservation Authority (2014), South Nation Conservation (2014), United Counties of Leeds and Grenville, © Queen's Printer for Ontario

- Legend**
- Municipal Boundaries
  - Urban Settlement Area
  - Rural Settlement Area
  - Thousand Islands Parkway
  - Provincial Highway
  - County Road
  - Active Railway
  - Abandoned Railway
  - Cataraqui Region Conservation Authority
  - Rideau Valley Conservation Authority
  - South Nation Conservation Authority



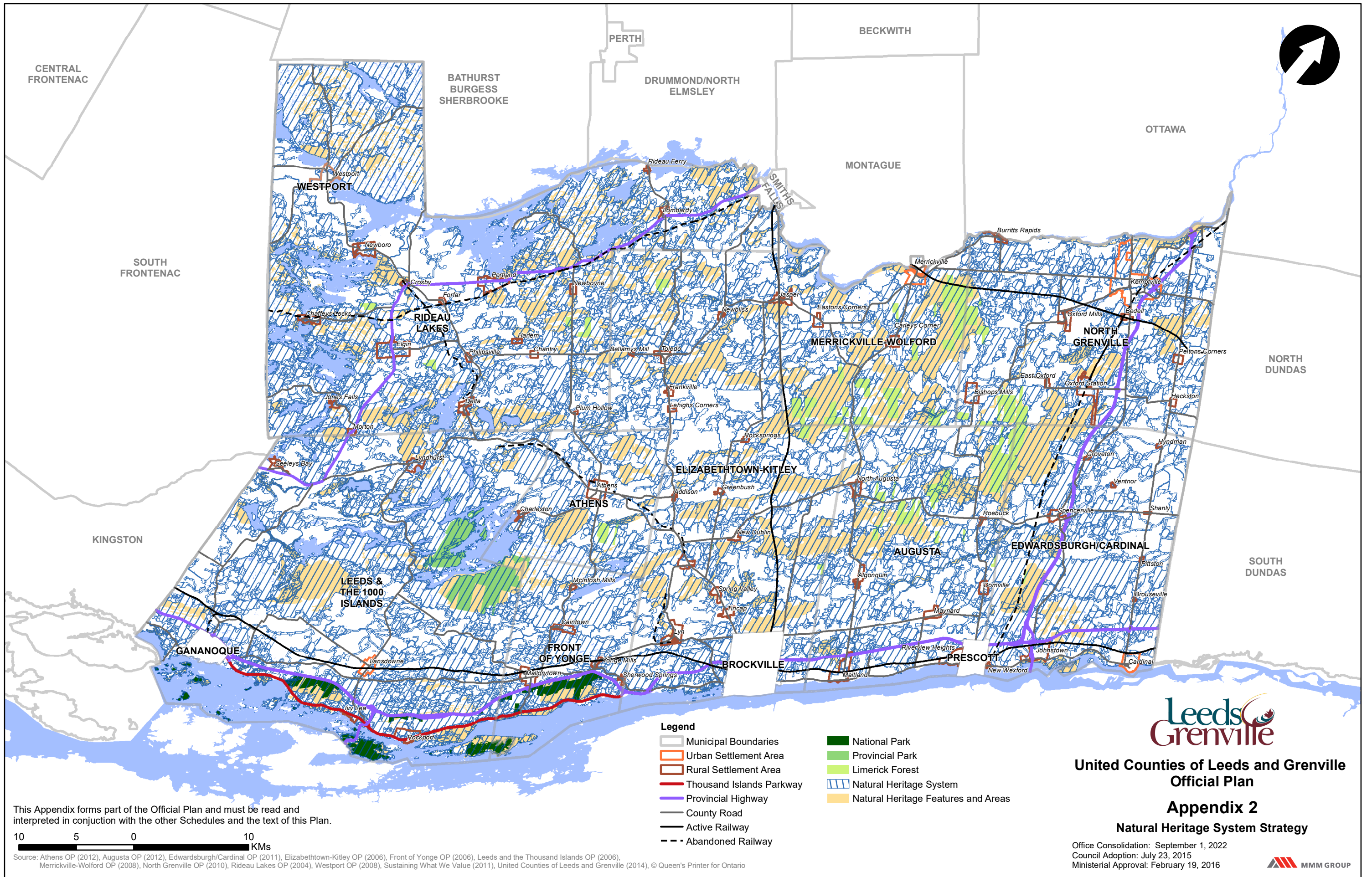
**United Counties of Leeds and Grenville  
Official Plan**

**Appendix 1**

**Conservation Authorities**

Office Consolidation: September 1, 2022  
Council Adoption: July 23, 2015  
Ministerial Approval: February 19, 2016





This Appendix forms part of the Official Plan and must be read and interpreted in conjunction with the other Schedules and the text of this Plan.

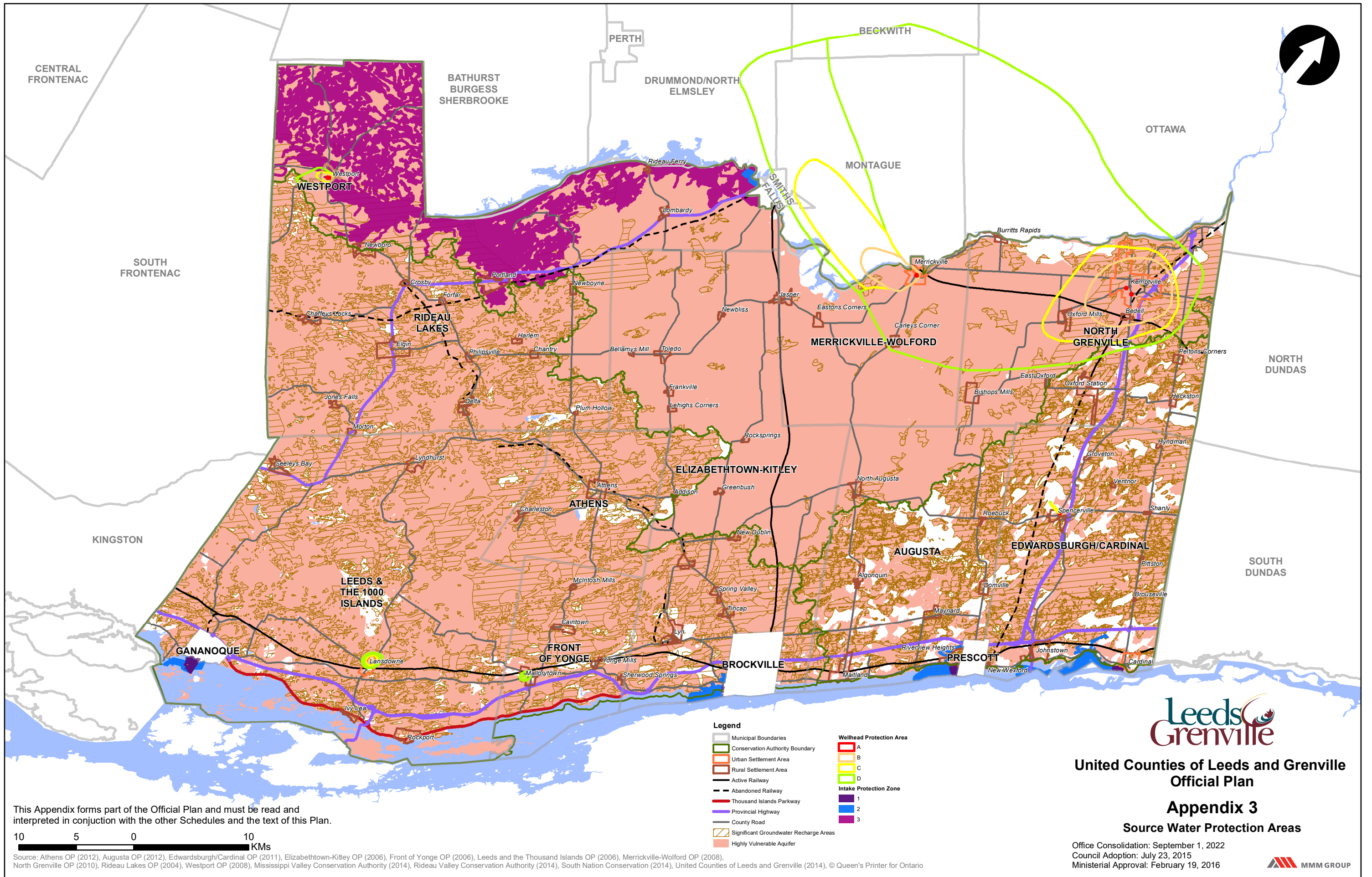
10 5 0 10  
KMs

Source: Athens OP (2012), Augusta OP (2012), Edwardsburgh/Cardinal OP (2011), Elizabethtown-Kitley OP (2006), Front of Yonge OP (2006), Leeds and the Thousand Islands OP (2006), Merrickville-Wolford OP (2008), North Grenville OP (2010), Rideau Lakes OP (2004), Westport OP (2008), Sustaining What We Value (2011), United Counties of Leeds and Grenville (2014), © Queen's Printer for Ontario

**Leeds  
Grenville**  
United Counties of Leeds and Grenville  
Official Plan  
**Appendix 2**  
Natural Heritage System Strategy

Office Consolidation: September 1, 2022  
Council Adoption: July 23, 2015  
Ministerial Approval: February 19, 2016





This Appendix forms part of the Official Plan and must be read and interpreted in conjunction with the other Schedules and the text of this Plan.

10 5 0 10  
KMs

Source: Athens OP (2012), Augusta OP (2012), Edwardsburgh/Cardinal OP (2011), Elizabethtown-Kitley OP (2006), Front of Yonge OP (2006), Leeds and the Thousand Islands OP (2006), Merrickville-Wolford OP (2008), North Grenville OP (2010), Rideau Lakes OP (2004), Westport OP (2008), Mississippi Valley Conservation Authority (2014), Rideau Valley Conservation Authority (2014), South Nation Conservation (2014), United Counties of Leeds and Grenville (2014), © Queen's Printer for Ontario



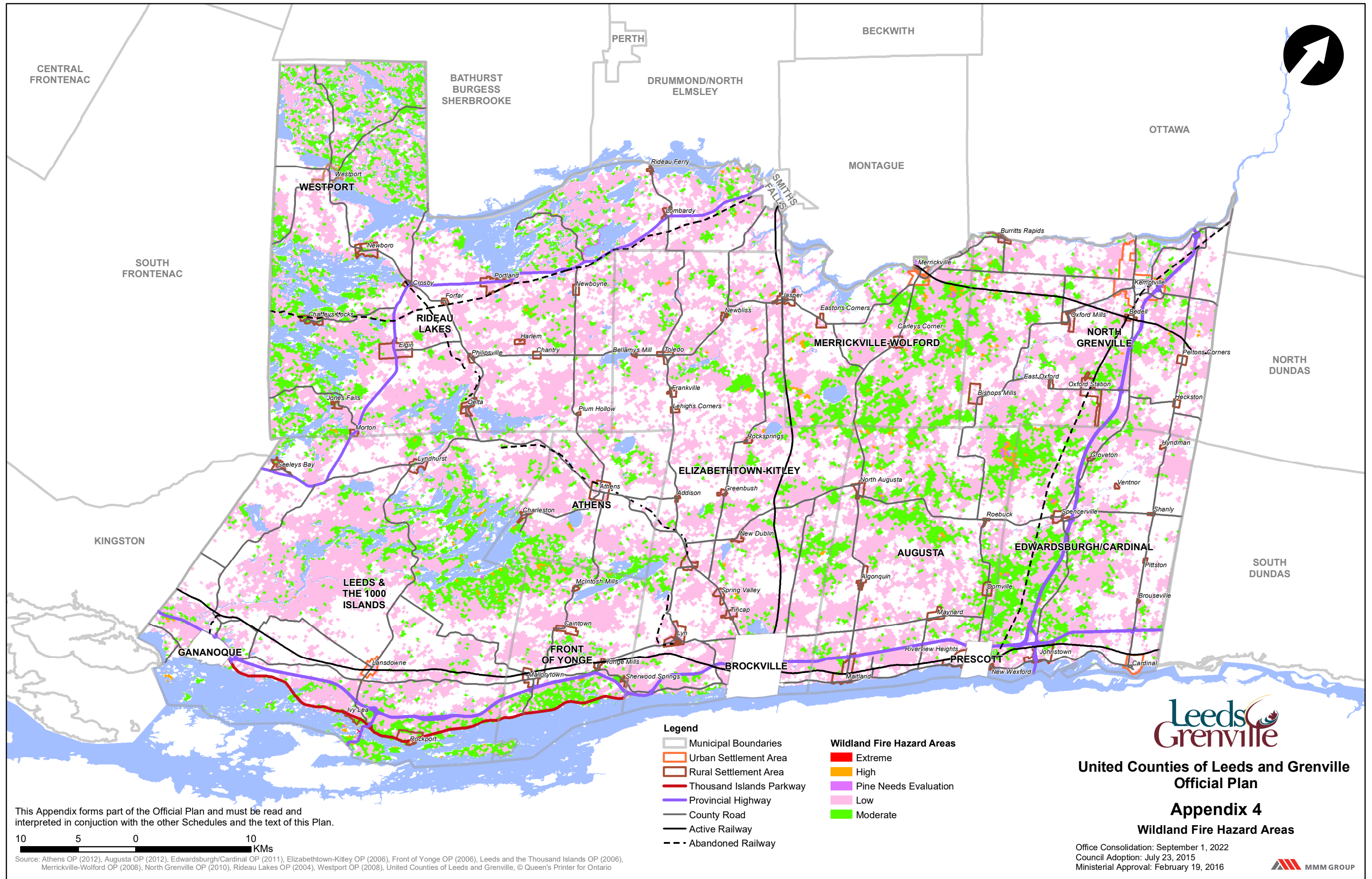
**United Counties of Leeds and Grenville  
Official Plan**

**Appendix 3**

**Source Water Protection Areas**

Office Consolidation: September 1, 2022  
Council Adoption: July 23, 2015  
Ministerial Approval: February 19, 2016





**Legend**

- Municipal Boundaries
- Urban Settlement Area
- Rural Settlement Area
- Thousand Islands Parkway
- Provincial Highway
- County Road
- Active Railway
- Abandoned Railway
- Wildland Fire Hazard Areas - Extreme
- Wildland Fire Hazard Areas - High
- Wildland Fire Hazard Areas - Pine Needs Evaluation
- Wildland Fire Hazard Areas - Low
- Wildland Fire Hazard Areas - Moderate

This Appendix forms part of the Official Plan and must be read and interpreted in conjunction with the other Schedules and the text of this Plan.

10 5 0 10  
KMs

Source: Athens OP (2012), Augusta OP (2012), Edwardsburgh/Cardinal OP (2011), Elizabethtown-Kitley OP (2006), Front of Yonge OP (2006), Leeds and the Thousand Islands OP (2006), Merrickville-Wolford OP (2008), North Grenville OP (2010), Rideau Lakes OP (2004), Westport OP (2008), United Counties of Leeds and Grenville, © Queen's Printer for Ontario



**United Counties of Leeds and Grenville  
Official Plan**

**Appendix 4**

**Wildland Fire Hazard Areas**

Office Consolidation: September 1, 2022  
Council Adoption: July 23, 2015  
Ministerial Approval: February 19, 2016

