



City of Duncan

Streets & Parking Regulations Bylaw No. 3101, 2014

(With Amendments to November 20, 2023)

Consolidated for Convenience Only

This consolidation is not a legal document. Certified copies of the original bylaws should be consulted for all interpretations and applications of the bylaws of this subject

Bylaw No. 3101.01, 2014 – Adopted December 22, 2014

Bylaw No. 3101.02, 2017 – Adopted April 24, 2017

Bylaw No. 3101.03, 2019 – Adopted August 19, 2019

Bylaw No. 3101.04, 2023 – Adopted November 20, 2023

CITY OF DUNCAN

BYLAW NO. 3101, 2014

STREETS AND PARKING REGULATIONS BYLAW

WHEREAS Council is authorized, pursuant to the *Motor Vehicle Act*, the *Highway Scenic Improvement Act*, and the *Local Government Act* to regulate traffic and the use of highways and use of public areas within the municipality.

NOW THEREFORE the Council of the City of Duncan enacts as follows:

INTRODUCTION

1. Title
 - 1.1 This Bylaw may be cited for all purposes as “Streets and Parking Regulations Bylaw No. 3101, 2014”.
2. Applicability
 - 2.1 This bylaw applies to all lands within the area incorporated as the City of Duncan.
 - 2.2 The provisions of this bylaw in relation to drivers of *vehicles* also apply to all of the following:
 - (a) *persons* riding a *cycle* or an animal;
 - (b) *persons* driving an animal drawn *vehicle*.
 - 2.3 The provisions of this bylaw do not apply to any of the following:
 - (a) *persons*, *vehicles* or other equipment while lawfully engaged in *highway* or public utility construction, maintenance or repair work on, over or under the surface of a *highway*;
 - (b) the driver of a *vehicle* specifically designed for the purpose of towing another *vehicle* while hooking-up another *vehicle* to be towed;
 - (c) the driver of an *emergency vehicle* that is
 - i. carrying rescue or first-aid equipment for and during an emergency situation;
 - ii. showing an emergency light (flashing red or blue light);
 - iii. being used for loading or unloading *persons* to and from an ambulance;
 - (d) a Royal Canadian Mounted Police (RCMP) officer who is in the immediate pursuit of an actual or suspected violator of the law.
 - 2.4 Where anything in this bylaw conflicts with the Emergency Vehicle Driving Regulation under the *Motor Vehicle Act* (the “Regulation”), the Regulation prevails.
 - 2.5 This bylaw does not apply to arterial *highways* classified as such by order of the Lieutenant Governor in Council pursuant to the *Transportation Act*.

3. Definitions

3.1 In this bylaw, unless the context otherwise requires, words or phrases shall have the same meaning as defined in the *Motor Vehicle Act*, the *Transportation Act* or the *Commercial Transport Act*, or their regulations.

3.2 In this bylaw, unless the context otherwise requires:

| | |
|---|---|
| " <i>angle parking</i> " | means the <i>parking</i> of a <i>vehicle</i> other than parallel to a <i>curb</i> or lateral lines of a <i>roadway</i> |
| " <i>boulevard</i> " | means that portion of a <i>highway</i> between the <i>curb</i> lines or the lateral lines of a <i>roadway</i> and the adjoining property or <i>roadway</i> , and includes <i>curbs</i> , <i>sidewalks</i> , tree wells and ditches |
| " <i>bus</i> " | means a <i>vehicle</i> designed to carry more than ten persons |
| " <i>bus stop zone</i> " | means an area on a <i>highway</i> or <i>roadway</i> marked for the stopping or <i>parking</i> of buses to allow the ingress and/or egress of passengers and limited to use for <i>vehicles</i> operated for public transport by the BC Transit system, its designate or successor |
| " <i>Bylaw Enforcement Officer</i> " | means a person appointed by the <i>City</i> for the enforcement of <i>City</i> bylaws |
| " <i>camper</i> " | means a structure designed to be mounted on a <i>vehicle</i> and to provide facilities for human habitation or camping purposes |
| " <i>Chief Administrative Officer</i> " (CAO) | means the person appointed by <i>Council</i> as the <i>Chief Administrative Officer</i> or his/her Deputy as appointed by <i>Council</i> . |
| " <i>City</i> " | means the Corporation of the <i>City</i> of Duncan |
| " <i>City block</i> " | means the portion of the <i>highway</i> between two separate <i>intersections</i> , shown as an example in Exhibit "A" of this bylaw, in all areas of the <i>City</i> except that area defined in Exhibit "B" of this bylaw, which is grouped together and considered as one <i>City block</i> and described as being north of Government Street, south of and including Evans Street, east of Boundary Street, and west of and including Duncan Street |
| " <i>Commercial Vehicle</i> " | means a <i>vehicle</i> used by a person on a <i>highway</i> within the <i>City</i> , if the <i>vehicle</i> is a <i>commercial vehicle</i> as defined by and licensed under the <i>Commercial Transport Act</i> |
| " <i>Commercial Vehicle Loading Zone</i> " | means that portion of a <i>highway</i> designated by a <i>traffic control device</i> for the exclusive use of <i>commercial vehicles</i> loading or unloading freight or other goods |
| " <i>Council</i> " | means the <i>Council</i> of the <i>City</i> |

Amended
by 3101.03

| | | |
|--------------------|--|---|
| | “crosswalk” | means a portion of the <i>highway</i> at an <i>intersection</i> or elsewhere distinctly indicated for <i>pedestrian</i> crossing by signs, lines, brickwork, concrete pavers, <i>traffic control devices</i> or other markings on the <i>highway</i> surface |
| | “curb” | means the line of demarcation between the <i>highway</i> and the <i>boulevard</i> , or the line of demarcation between the <i>highway</i> and the <i>sidewalk</i> |
| | “cycle” | means a device having any number of wheels that is propelled by human power and on which a person may ride and includes a motor assisted <i>cycle</i> |
| | “cycle path” | means that portion of a <i>highway</i> intended either exclusively or partially for use by cyclists |
| | “Day-use Parking Permit” | means a permit issued by the <i>City</i> to a person requiring access to <i>vehicles</i> in close proximity of a building for the purpose of building repairs, construction or demolition |
| | “Director of Corporate Services” | means the person appointed by <i>Council</i> as the Director of Corporate Services or his/her Deputy as appointed by Council |
| | “Director of Finance” | means the person appointed by <i>Council</i> as the <i>Director of Finance</i> or his/her Deputy as appointed by Council. |
| Amended by 3101.03 | “disabled employee parking exemption permit” | means a permit issued by the <i>City</i> on a monthly basis, in the form and with content set out by the <i>Director of Corporate Services</i> , to a <i>disabled person</i> with a <i>valid disabled person’s parking permit</i> , which authorizes the parking of a <i>vehicle</i> on a <i>highway</i> in excess of the posted time limit on a <i>traffic control device</i> . |
| | “disabled person” | means a person whose mobility is limited as a result of a permanent or temporary disability that makes it impossible or difficult to walk |
| | “disabled person’s parking permit” | means a valid placard issued by the Social Planning and Research Council of British Columbia (SPARC BC) or other organizations operating on behalf of SPARC BC; to or on behalf of a <i>disabled person</i> ; or by another province or foreign jurisdiction with respect to the <i>parking</i> of <i>vehicles</i> owned or operated by <i>persons</i> with disabilities or on their behalf |
| Amended by 3101.03 | “downtown core” | means the area in the <i>City</i> bounded by and including the north side of Government Street, east side of Duncan Street, north side of Evans Street, west side of Boundary Street, as shown in Exhibit “B” of this bylaw |

Amended
by 3101.03

| | |
|--------------------------|---|
| "driveway access permit" | means a permit issued by the <i>City</i> to construct a driveway |
| "emergency vehicle" | has the same meaning as defined in the <i>Motor Vehicle Act</i> |
| "Fire Chief" | means the <i>Fire Chief</i> of the Duncan Volunteer Fire Department as appointed by <i>Council</i> and includes his/her Deputy or authorized designate |
| "firearm" | has the same meaning as defined in the <i>Criminal Code</i> |
| "highway" | includes every <i>highway</i> within the meaning of the <i>Transportation Act</i> , every road, <i>street</i> , <i>lane</i> , bridge, <i>boulevard</i> , <i>sidewalk</i> , or right-of-way designed or intended for or used by the general public for the passage or access of <i>vehicles</i> in the <i>City</i> |
| "human powered device" | means a skateboard, roller skates, skis, inline skates, play scooter, <i>cycles</i> , or any other similar means of conveyance, but does not include a wheelchair used for medical related ambulatory assistance, or a carriage or stroller used to transport a child |
| "idle" and "idling" | means the operation of an internal combustion engine of a <i>vehicle</i> while the <i>vehicle</i> is not in motion |
| "intersection" | has the same meaning as defined in the <i>Motor Vehicle Act</i> |
| "jaywalk" | means to cross a <i>street</i> carelessly or in an illegal manner, without the use of a <i>crosswalk</i> , so as to be endangered by <i>traffic</i> |
| "lane" | means any <i>highway</i> abutting the rear or sidelines of parcels of land and intended primarily to give access to the rear of residences or business establishments |
| "median" | means <ul style="list-style-type: none"> • an area that is painted, curbed or raised and is located between <i>traffic</i> lanes to separate <i>vehicles</i> travelling in opposite directions; • any unpaved portion of the road allowance, including but not limited to landscaped areas and greens, located between two or more <i>highways</i>, <i>roadways</i> or <i>streets</i>; • a <i>traffic</i> circle or other <i>traffic</i> divider |
| "micro car" | means a <i>vehicle</i> , including <i>motorcycles</i> , mopeds and scooters, with a maximum total length of 3.8 metres |

Amended by
3101.01

Amended
by 3101.03

| | |
|---|--|
| | (approximately 12.50 feet) |
| "motorcycle" | has the same meaning as defined in the <i>Motor Vehicle Act</i> |
| "motorized wheelchair" | means a mobility assist device used for medical related ambulatory assistance that is propelled by means of an electric motor rather than manual power |
| "occupier", as applied to personal property | has the same meaning as defined in the <i>Community Charter</i> |
| "Offence Notice" | means a notice issued to a <i>vehicle owner</i> or operator for <i>traffic or parking violation(s)</i> |
| | |
| "owner" as applied to real property | has the same meaning as defined in the <i>Community Charter</i> |
| "owner", as applied to a vehicle | has the same meaning as defined in the <i>Motor Vehicle Act</i> |
| "paid parking permit" | means a permit issued by the <i>City</i> for the purpose of <i>parking a vehicle</i> in a <i>City</i> operated <i>parking</i> lot or space for a specified time period |
| "parade permit" | means a permit issues to allow for a public procession or group of <i>pedestrians</i> , <i>standing</i> or marching or walking on any <i>highway</i> or <i>sidewalk</i> , or any group of <i>vehicles standing</i> or moving in a procession on any <i>highway</i> , celebrating a special day or event, except for a funeral procession |
| "park" and "parking" | means the <i>standing</i> of a <i>vehicle</i> , whether occupied or not |
| "parking space" | means an area on a <i>highway</i> or <i>City</i> operated <i>parking</i> lot or space designated as a <i>parking</i> place for a <i>vehicle</i> |
| "parallel parking" | means <i>parking</i> of a <i>vehicle</i> parallel to the <i>curb</i> or edge of a <i>highway</i> |
| "peace officer" | Includes a mayor, sheriff and sheriff's officer, a warden, correctional officer, and any other officer or permanent employee of a penitentiary, prison, correctional centre or youth custody centre, and a police officer, police constable, constable or other person employed for the preservation and maintenance of the public peace |

| | |
|--|---|
| " <i>person</i> " | includes a corporation partnership or party, and the personal or other legal representatives of a <i>person</i> to whom the context can apply according to law |
| " <i>pedestrian</i> " | means a <i>person</i> on foot, or a <i>disabled person</i> or child in a wheelchair or carriage |
| " <i>public park</i> " | means every open space, playground, urban forest (including all driveways, <i>highways</i> , paths and <i>lanes</i> within a <i>public park</i> , playground or urban forest) owned or controlled by the <i>City</i> |
| " <i>real property</i> " | has the same meaning as defined in the <i>Community Charter</i> |
| " <i>recreational vehicle</i> " | means a <i>vehicle</i> , <i>trailer</i> , motorhome, <i>camper</i> , holiday <i>trailer</i> , boat, or boat <i>trailer</i> , with or without the boat, designed or used primarily for accommodation during travel or recreation |
| " <i>resident</i> " | means a <i>person</i> who resides in the <i>City</i> |
| " <i>Residential Parking Permit</i> " | means a permit issued by the <i>City</i> on an annual basis to a <i>resident</i> in respect of a specific <i>vehicle</i> registered to that <i>resident's</i> home address, which authorizes the <i>parking</i> of a <i>vehicle</i> on a <i>highway</i> contrary to a <i>traffic control device</i> |
| " <i>reverse turn</i> " or " <i>U-turn</i> " | means a turn that a driver or <i>vehicle</i> operator makes while driving a <i>vehicle</i> , that causes the <i>vehicle</i> to begin going in the opposite direction; a 180-degree turn |
| " <i>roadway</i> " | means that portion of a <i>highway</i> which is improved, designed, or ordinarily used for vehicular <i>traffic</i> , and includes paving, underground utilities, <i>curbs</i> and gutters |
| " <i>school traffic patrol</i> " | means a number of pupils of a private or public school, or other <i>persons</i> , appointed by a school principal, or other designated <i>person</i> , for the purpose of assisting <i>pedestrians</i> in safely accessing <i>crosswalks</i> to cross <i>highways</i> in close proximity to schools |
| " <i>sidewalk</i> " | means the area between the <i>curb</i> lines or lateral lines of a <i>highway</i> and the adjacent property lines improved with a concrete surface for the use of <i>pedestrians</i> |
| " <i>sidewalk cafes</i> " | means a portion of a <i>City sidewalk</i> used for the service of food and beverages in connection with an adjacent restaurant or cafe and are limited to the use of tables and chairs only |
| " <i>spitter ticket</i> " | means a ticket dispensed from a machine for the purpose of <i>parking</i> a <i>vehicle</i> in a <i>City</i> operated <i>parking</i> lot or <i>parking space</i> for a specified time period |

| | |
|-----------------------------------|--|
| <p>“stand” and “standing”</p> | <p>means the halting of a <i>vehicle</i>, whether occupied or not, and whether the engine is running or not</p> |
| <p>"street"</p> | <p>includes a <i>highway</i>, as defined in this bylaw</p> |
| <p>“street occupancy permit”</p> | <p>means a permit issued by the <i>City</i> to temporarily close or occupy a specific portion of any <i>highway</i> or <i>roadway</i> for any purpose, including but not limited to the following:</p> <p>installation, maintenance or removal of utilities;</p> <p>a festival, block party, or activity connected with the production of a film requiring that <i>traffic</i> be restricted on or diverted from a <i>highway</i>; or</p> <p>temporary <i>parking</i> of construction <i>vehicles</i>, unattached <i>trailers</i> and containers on a <i>highway</i>;</p> <p>use of the <i>highway</i> or <i>roadway</i> or <i>parking</i> of a <i>vehicle</i> or <i>vehicles</i> for activity connected with a particular event or project that, for reasons of safety or security, requires temporary closure of any portion of the <i>highway</i> or <i>roadway</i> in a specified location</p> |
| <p>“taxi”</p> | <p>has the same meaning as defined in the <i>Motor Vehicle Act</i> and regulated by the <i>Passenger Transportation Act and Regulations</i></p> |
| <p>“taxi zone”</p> | <p>means an area on a <i>highway</i> or <i>roadway</i> marked for the stopping or <i>parking</i> of <i>taxis</i> to allow the loading and unloading of passengers</p> |
| <p>“traffic”</p> | <p>includes <i>pedestrians</i>, <i>vehicles</i>, <i>cycles</i>, and other conveyances, either singly or together, while using a <i>highway</i> for the purposes of <i>standing</i> or travel</p> |
| <p>“traffic control device”</p> | <p>means a sign, including portable ‘no <i>parking</i> signs’, signal, line, meter, marking, <i>crosswalk</i>, space, barrier, barricades, or device, placed or erected by authority of the <i>City</i></p> |
| <p>"trailer"</p> | <p>has the same meaning as defined in the <i>Motor Vehicle Act</i></p> |
| <p>"vehicle"</p> | <p>means a device in, on or by which a <i>person</i> or thing is or may be transported or drawn on a <i>highway</i>, but does not include a device designed to be moved by human power, a device used exclusively on stationary rails or tracks, mobile equipment or a motor assisted <i>cycle</i></p> |
| <p>“walkway”</p> | <p>means a path or area intended for <i>pedestrians</i> and non-motorized <i>traffic</i> only, except that a <i>walkway</i> may be designed to afford <i>emergency vehicle</i> use</p> |

4. Interpretation

- 4.1 Any enactment referred to herein is a reference to an enactment of British Columbia or Canada, as the case may be, and regulations thereto, as amended, revised, consolidated, or replaced from time to time, and any bylaw referred to herein is a reference to an enactment of the *Council* of the *City*, as amended, revised, consolidated, or replaced from time to time.
- 4.2 Words importing the singular include the plural and vice-versa; and words importing a male *person* include a female *person* and a corporation.
- 4.3 The headings used in this bylaw are for convenience of reference only and do not form part of this bylaw, and shall not be used in the interpretation of this bylaw.

GENERAL REGULATIONS

6. Caution in Backing Vehicle

- 6.1 The driver of a *vehicle* must not cause the *vehicle* to move backwards into an *intersection* or over a *crosswalk*, and must not in any event or at any place cause a *vehicle* to move backwards unless the movement can be made safely.

7. Centre Line Marking

- 7.1 A *person* operating any *vehicle* or *cycle* when traveling on any of the *highways* so marked must ensure that such *vehicle* or *cycle* keeps to the right hand side of the marked centre line.

8. Crosswalks

- 8.1. For the better regulation of *traffic*, the *City* may mark or cause to be marked any portion of the *highway* at an *intersection* or elsewhere distinctly indicated for *pedestrian* crossing by signs, lines, brickwork, concrete pavers, *traffic control devices* or other markings on the road surface.

9. Cyclist Provisions

- 9.1. A *person* operating a *cycle* on a *highway* has the same rights and duties as a driver of a *vehicle* and
- (a) must not, for the purpose of crossing a *highway*, ride the *cycle* on a *crosswalk*;
 - (b) must not ride the *cycle* on a *sidewalk* or *walkway*;
 - (c) must not leave the *cycle* on a *highway* or public place in a position which obstruct the free movement of *pedestrian* or *vehicle traffic*, and where a *cycle* is found as stated herein, the said *cycle* may be impounded forthwith;
 - (d) must yield the right-of-way to any *pedestrian*, strollers or wheelchairs.

10. Debris Removal

- 10.1. Every *person* who removes a wrecked or damaged *vehicle* from the scene of an accident on a *highway* must remove all glass and other debris or substance caused by the accident from the *highway*.

11. Drainage

11.1. A *person* must not alter or stop the flow of water through any drain, sewer, ditch or culvert on any *highway*.

12. Driveway Access Permit

12.1. A *person* must not alter an existing access to a property or construct a new access to a property without obtaining a *driveway access permit* issued by the *City* for a fee in accordance with the *City's Fees and Charges Bylaw*.

13. Fire Hazards

13.1. Any Duncan Volunteer Fire Department member, while in the course of duty in or about a fire or at the scene of any accident, may, in order to expedite *traffic* or safeguard *pedestrians*, direct *traffic* onto any *highway* in the vicinity of the accident or fire scene.

14. Firearm Discharge

14.1. A *person* must not discharge or cause to discharge any *firearm* within the limits of the *City* without written authority from the *Council*.

15. Load Secured

15.1. A *person* must not operate a *vehicle*, or combination of *vehicle* and *trailer*, on a *highway* unless it is so constructed, loaded, or covered so as to prevent any of its load from dropping, shifting, leaking, or otherwise falling or escaping therefrom.

16. Medians

16.1. A *person* must not

- (a) occupy a *median* by squatting, kneeling, sitting, or lying down on it;
- (b) *stand* or walk on a *median* except while lawfully crossing a *street*;
- (c) place any structure, tent, object or thing on a *median*.

16.2. The *City* may cause the removal or impounding of any structure, tent, object or thing found on a *median* in contravention of this bylaw.

17. Motorized Wheelchairs

17.1. *Motorized wheelchairs* or other mobility assist devices used for medical related ambulatory assistance

- (a) are permitted on *City sidewalks* and are treated the same as *pedestrians* under this bylaw;
- (b) must not be operated at a speed greater than 3 km/hr. and yield to pedestrians.

18. Objects or Works on Highways

- 18.1. Except as authorized by a *street occupancy permit* issued by the *City*, a *person* must not
- (a) build, construct, place or maintain, or cause to be built, constructed, placed or maintained in, on, or over any *highway* or *boulevard*, any structure, sign, building, fence, tent, or thing;
 - (b) break, tear up, remove, or otherwise interfere with any *sidewalk*, *curb*, surfacing or subsurface of any *highway*, or excavate, or cause to be excavated, on or under any *highway* or *boulevard*;
 - (c) construct a *boulevard* crossing, including a *curb*, ditch or *sidewalk* crossing;
 - (d) change, or cause to be changed, the level of any *highway* whatsoever;
 - (e) obstruct or interfere with the free flow of *traffic* or attempt to control or detour *traffic* on any *highway* or *sidewalk*;
 - (f) cut, saw, break, split, place or pile firewood, lumber, blocks, stone, debris or other material or mix mortar or do any act on any *highway*;
 - (g) place a container on a *highway*, *roadway* or *sidewalk* for the purpose of construction or demolition waste.

19. Obstruction of Traffic

- 19.1. A *person* must not interfere with any barricade, sign, warning lamp or other *traffic control device*, placed by the *City* on any *highway* or *sidewalk* at or near any excavation, obstruction or work on the *highway* or *sidewalk*.
- 19.2. A *person* must not engage in any sport, amusement, exercise, or occupation or in an unsafe manner on a *highway*, *boulevard*, *sidewalk* or *median* or *stand* or loiter in such a manner as to obstruct, impede or interfere with the passage of *vehicles*, cyclists or *pedestrians* on a *highway* or *sidewalk*.
- 19.3. A *person* must not throw or cause or allow to be deposited or tracked from a *vehicle* or to flow on a *highway* or *sidewalk*, any water, oil, gasoline, grease, soil, glass, vegetable, fruit, garbage, sand, gravel, rock or any solid or liquid material or other substance, article or thing.
- 19.4. A *person* must not leave any excavation or other obstruction on a *highway* or *sidewalk* without placing barricades or warning lights.
- 19.5. A *person* must not, unless directed by a *traffic control device* or *City* employee, working on behalf of the *City*, *Fire Chief*, or Duncan Volunteer Fire Department member, *Bylaw Enforcement Officer*, *Peace Officer* or RCMP Officer, acting on behalf of the *City*, proceed along or lead, ride any animal or drive any *vehicle* in or upon, through or over any *highway* or *sidewalk* closed to *traffic*.
- 19.6. A *person* must not place, deposit or leave upon or in any *highway*, *sidewalk* or other public place any *cycle*, chattel, obstruction, *vehicle* or other thing that is, or is likely to be, a nuisance. Without restricting the generality of this section, such *cycle*, chattel, obstruction, *vehicle* or other thing must not be permitted to remain unmoved or within the immediate vicinity of the said location for a period greater than twenty-four (24) hours, except by permit.

- 19.7. A *person* must not, unless and except as provided for in this bylaw or in any bylaw of the *City*, deposit materials or goods on any *highway* or *sidewalk* where the materials or goods hinder or interfere with *traffic* on, or obstructs the free use of, the *highway* or *sidewalk*.
- 19.8. A *City Bylaw Enforcement Officer, Peace Officer, or any person* duly authorized by the *City*, is authorized to
- (a) determine whether a *vehicle* has been abandoned and if that *Bylaw Enforcement Officer, Peace Officer* or other duly authorized *person* is satisfied that a *vehicle* has been abandoned, that *person* may cause the *vehicle* to be removed and disposed of in accordance with this bylaw;
 - (b) cause the removal of any structure, object, substance or thing found on any *sidewalk, highway* or *boulevard* found to be in contravention of this bylaw;
 - (c) cause the removal and storage of any *vehicle* parked on any *highway* or any other public property that is blocking any driveway or preventing the safe passage of *vehicles* or *pedestrians*;
 - (d) direct *traffic* as required for the safe passage of *vehicles* and *pedestrians*.
- 19.9. A *City Fire Chief, Deputy Fire Chief, or any other person* duly authorized by the *Fire Chief* or *Deputy Fire Chief*, is authorized to
- (a) direct *traffic* as required for the safe passage of *vehicles* and *pedestrians*;
 - (b) cause to be removed and stored, any *vehicle* parked on any *highway* or any other public or private property that is preventing the safe and efficient fire fighting capabilities.
- 19.10. Where, under this bylaw, a *Bylaw Enforcement Officer, Peace Officer, CAO, Director of Corporate Services, Royal Canadian Mounted Police Officer, contractor* or employee of the *City*, or other authorized *person* while working on behalf of the *City*, is empowered with the authority to make orders in respect of certain matters, that power includes the power to rescind, revoke, amend or vary an order made by him or her, subject to the terms and conditions of this bylaw.
20. Offence Notice Removal
- 20.1. An *Offence Notice* placed or affixed on a *vehicle* by a *Bylaw Enforcement Officer, Peace Officer, RCMP Officer, or other City* authorized person under this bylaw must not be removed by any *person* other than the *owner* or operator of the said *vehicle*.
21. One-Way Streets
- 21.1. All of Jubilee Street between Government Street and Kenneth Street is designated as a one-way *highway* for *vehicle* and *cycle traffic* proceeding in a northerly direction.
- 21.2. All of Craig Street between Government Street and Ingram Street is designated as a one-way *highway* for *vehicle* and *cycle traffic* proceeding in a northerly direction.

22. Notices, Handbills, Posters or Advertisements on Street Structures

- 22.1. A *person* must not place a notice, handbill, poster or advertisement on a structure or fixture that is in or on a *highway, sidewalk* or other public property without *City* approval.
- 22.2. For the purposes of the *City's* enforcement of section 21.1 of this bylaw, evidence that a notice, handbill, poster, or advertisement was placed contrary to the provisions of section 21.1 may be treated as evidence that the notice, handbill, poster or advertisement was placed by the *person* who caused or authorized that placing.

23. Parades and Processions

- 23.1. Except as authorized by a *parade permit* issued by the *City*, a *person* must not take part in a *parade*, or a procession or other demonstration of any kind or nature or public meeting of any kind or nature, through, in, on, over or above any *sidewalk, highway*, public square or public place in the *City*.

24. Pedestrians

- 24.1. A *pedestrian* must not walk against a *traffic control device*.
- 24.2. A *pedestrian* must not run, race, or play in or on any *highway* or *sidewalk* or crowd or jostle any other *pedestrians* within the *City*, in such manner as to create discomfort, disturbance or confusion.
- 24.3. Except as permitted by an authorized *parade permit*, a *pedestrian* must not *stand, lounge, loiter* or assemble on any *highway* or *sidewalk* so as to obstruct or prevent other *persons* from using the *highway* or *sidewalk* for the passage of *vehicles* or other *pedestrians*.
- 24.4. A *pedestrian* or any other *person* must not expectorate on any *City sidewalk*.
- 24.5. A *pedestrian* must not *jaywalk* within the *City*.

25. Private Highways and Lane

- 25.1. Every *person* being the *owner* of any privately owned *highway* or *lane* used for the safe passage of *vehicles* and *pedestrians* must maintain the *highway* or *lane* in a clean and fit state.

26. Reverse Turns or U-turns

- 26.1. A *vehicle* must not be driven or operated by a *person* in any manner so as to *reverse turn* on any *highway* unless permitted by a *traffic control device*.

27. School Traffic Patrols

- 27.1. The principal, or other designated *person*, of a public or private school may appoint a number of pupils of the school, or other *persons*, as members of a *school traffic patrol* with the power to require *vehicles* to stop at *crosswalks*, to assist *pedestrians* in crossing *highways*, in the vicinity of schools by displaying flags or other devices bearing the word "Stop".
- 27.2. *Vehicle* operators must stop when requested to do so by the display of the appropriate flags or other devices by members of a *school traffic patrol*.

28. Sidewalks, Boulevards and Walkways

- 28.1. Unless otherwise permitted by an applicable *traffic control device*, a person must not
- (a) ride any animal along any *sidewalk, boulevard* or *walkway*;
 - (b) drive a *vehicle* along any *sidewalk, boulevard* or *walkway*.

29. Sidewalk Cafes

- 29.1. *Sidewalk Cafes* are permitted on public *sidewalks* in accordance with the following:
- (a) where a business has *street* frontage and where a business fronts on two *streets*, tables and chairs associated with *sidewalk cafes* are permitted on each *sidewalk* fronting the business;
 - (b) *sidewalk cafes* are only permitted when associated with an immediately adjacent licenced cafe or restaurant, where the term 'licenced' refers to a municipal business licence issued for legal operation in the *City*;
 - (c) a minimum width of 1.2 metres (approximately 3.94 feet) of public *sidewalk* must be left fully clear and unencumbered;
 - (d) tables and chairs associated with the *sidewalk cafe* must not be placed on the public *sidewalk* during the hours that the adjacent cafe or restaurant is closed;
 - (e) tables and chairs, or combination thereof, associated with the *sidewalk cafe* must not occupy an area exceeding 3.7m² (40 sq. ft.) for each *street* frontage;
 - (f) the operator or *owner* of tables and chairs associated with *sidewalk cafes* must formally indemnify and hold harmless the *City*, in the form prescribed by the *City*, from all potential liabilities and claims that may arise as a result of the tables and chairs being placed on public *sidewalks*;
 - (g) the operator of the *sidewalk cafe* must obtain and provide proof of public liability insurance in an amount set by the *City*.
 - (h) for the purposes of this section *sidewalk cafes* shall consist of tables and chairs only.
 - (i) A permit being issued by the *City*.

30. Sidewalk Merchandise Tables and Display Apparatus

- 30.1. Merchandise tables and display apparatus are permitted on public *sidewalks* subject to the following:
- (a) where a business has *street* frontage and where a business fronts on two *streets*, tables or apparatus are permitted on each *sidewalk* fronting the business;
 - (b) merchandise tables and display apparatus must be associated with an immediately adjacent licenced business, where the term 'licenced' refers to a municipal business licence issued for legal operation in the *City*;

Amended by
3101.02

- (c) each merchandise table, display apparatus, or combination thereof, must not occupy an area exceeding 3.7m² (40 sq. ft.) for each *street* frontage, and no more than 50% of each frontage;
- (d) a minimum width of 1.2 metres (approximately 3.94 feet) of public *sidewalk* must be left fully clear and unencumbered;
- (e) the merchandise tables or display apparatus must not be placed on the public *sidewalks* during the hours when the adjacent business is closed;
- (f) the *owners* of the merchandise tables or display apparatus must formally indemnify and hold harmless the *City*, in a form prescribed by the *City*, from all potential liabilities and claims which may arise as a result of the merchandise tables or display apparatus being on public *sidewalks*;

Amended by
3101.02

- (g) the operator or *owner* of the merchandise tables or display apparatus must obtain and provide proof of public liability insurance in an amount set by the *City*;
- (h) A permit being issued by the *City*.

31. Skateboards, Roller Skates, Skis, Inline Skates, Play Scooters

- 31.1. A *person* must not operate skateboards, roller skates, skis, inline skates, play scooters, or any other similar means of conveyance, on the *sidewalks*, *highways*, *roadways*, or *parking* lots within the *downtown core*.
- 31.2. Skateboards, roller skates, skis, inline skates, play scooters or other similar means of conveyance being operated in a manner contrary to this bylaw may be impounded by the *City's Bylaw Enforcement Officers*, *Peace Officers*, the *CAO*, contractors or agents.
- 31.3. An impoundment fee in accordance with the *City's Fees and Charges Bylaw* may be charged to the *owner* for the return of skateboards, roller skates, skis, inline skates, play scooters or other similar means of conveyance being operated in the *downtown core*.

33. Speed Limits

Amended by
3101.04

- 33.1. A *vehicle* must not be driven or operated by any *person*
- (a) on a *highway* within the *City* at a rate of speed greater than 30 kilometres per hour except as otherwise marked by a *traffic control device*;
 - (b) on any *highway* within the *City* at a rate of speed greater than 30 kilometres per hour in any School Zone marked by a *traffic control device*;
 - (c) on any *highway* within the *City* at a rate of speed greater than 30 kilometres per hour in any Children Playing Zone marked by a *traffic control device*;
 - (d) on a *lane* within the *City* at a rate of speed greater than 20 kilometres per hour, except as otherwise marked by a *traffic control device*.
- 33.2. Notwithstanding section 33.1(a), a *vehicle* must not be driven or operated by any *person* on the following *highways* at a speed greater than 40 kilometres per hour except as otherwise marked by a *traffic control device*:
- (a) Government Street, except between Boundary Road and Duncan Street;
 - (b) Canada Avenue north of James Street;
 - (c) Coronation Avenue between Ypres Street and Trunk Road;
 - (d) Trunk Road from Duncan Street to Lakes Road.

34. Street Occupancy Permit

- 34.1. A *Street Occupancy Permit* may be issued by the *City* for temporary *parking* of construction *vehicles*, unattached *trailers* and containers on a *highway* for a fee in accordance with the *City's Fees and Charges Bylaw*.
- 34.2. Where required by the *City*, every *person* to whom a *Street Occupancy Permit* is granted must erect, and maintain a good and sufficient fence, railing, or barrier, around such obstruction, encroachment, excavation or works, and deposit with the *City*, a bond set by the *City* and proof of liability insurance indemnifying the *City* against any claim, loss or damage which may be result from such obstruction, encroachment, excavation or works.

35. Tires on Vehicles or Trailers

- 35.1. *Vehicles* having wheels, tires or tracks constructed or equipped with projecting spikes, cleats, ribs, clamps, flanges, lugs or other attachments or projections which extend beyond the tread or traction surface of the wheel, tire or track, are prohibited in the *City*, except when the use of tire chains are required for safety.

36. Traffic Control Devices

- 36.1. *Traffic control devices*, authorized by the *City* are for the purpose of giving effect to the provisions of the *Motor Vehicle Act* and this bylaw, and may be deemed necessary for the regulation, direction and control of *traffic* on any *highway*, *roadway* or *sidewalk* or *boulevard*;
- 36.2. A *person* must not drive, operate, stop or *park* a *vehicle* or *cycle* or act in a manner contrary to that indicated by any *traffic control device* in the *City*, except where

directed to do so by a *Bylaw Enforcement Officer*, RCMP member, *City* employee, while working on behalf of the *City*, or Duncan Volunteer Fire Department member.

37. Trails

37.1. *Cycles* are permitted on trails and *roadways* in Centennial Park, McAdam Park and Rotary Park, or any other *park* operated by the *City*, provided the *persons* operating the *cycles* give the right of way to *pedestrians* and provided that the *cycle* operators do not ride the *cycles* off the said trails.

37.2. A *person* must not ride a *cycle* near or on sensitive riparian or planted grass areas.

37.3. A *person* must not drive or operate any *vehicle* or *motorcycle* on any gravelled or grassed area on any trail or within any *public park* within *City* boundaries except as permitted by the *City*.

38. Trees, Shrubs or Hedges

38.1. A *person* must not plant any tree, shrub, bush or hedge at a distance of less than 61 centimetres (approximately 24 inches) from any *street* line within the *City*.

38.2. Every *person* being the *owner* or *occupier* of *real property* must not allow any trees, shrubs, bushes or other vegetation to grow in such a manner that it

- (a) encroaches into an adjacent *sidewalk*, *highway*, or public place;
- (b) impedes the safe or convenient passage of the public along an adjacent *sidewalk*, *highway*, or public place;
- (c) is injurious to the bed or construction of an adjacent *sidewalk*, *highway* or *roadway*; or
- (d) visually impairs sightlines of *pedestrian* or *vehicle traffic* on the *sidewalk* or *highway*.

39. A *person* must not injure or remove any tree, shrub, sapling, plant, flower or grass in any *boulevard*, *highway*, public place or *public park*, or any *park* operated by the *City* without *City* approval.

40. The *City* may order the removal or cause to be removed or to trim or cause to be trimmed any trees, shrubs, hedges or bushes growing or *standing* on lands adjacent to any *highway* in the *City* where in the opinion of the *City* the safety or convenience of the public so requires or where any such trees, shrubs, hedges or bushes become injurious to the road-bed, at the expense of the *owners* of lands on which they are growing.

PARKING REGULATIONS

41. Angle Parking

41.1. On those *roadways* that have been marked or signed for *angle parking* by *traffic control devices*, the operator of a *vehicle* must

- (a) *park* any *vehicle* at such angle indicated by *traffic control devices*, and if marked by lines must *park* the *vehicle* parallel to and between such lines;
- (b) *park* any *vehicle* in such a manner so that the front of the *vehicle* is pointed substantially in the general direction of the movement of *traffic* on the side

- of the *roadway* on which the *vehicle* is *parked* and, where there is a *curb*, with the nearest front of the *vehicle* within 30 centimetres of the *curb*; and
- (c) not *park* any *vehicle* so that any part of the *vehicle* or any load thereon extends into the travelled portion of the *highway*.

42. Day-use Parking Permits

42.1. *Day-use Parking Permits*

- (a) are only valid for *parking* in excess of the posted time limit on *streets* in close proximity to the address shown on the *Day-use Parking Permit*;
- (b) must be in a form issued by the *City*;
- (c) expire at midnight on the last day of the period for which the permit was issued;
- (d) must be placed face-up on the *vehicle* dashboard and visible through the *vehicle* front windshield;
- (e) fees must be paid in accordance with the *City's Fees and Charges Bylaw*.

43. Disabled Person's Parking Permit

43.1. *Council* designates the Social Planning and Research Council of British Columbia (SPARC BC) as the organization responsible for issuing and cancelling *Disabled Person's Parking Permits*.

43.2. *Parking* in any space designated by the *City* for *disabled person's parking* is permitted provided that

- (a) the *vehicle* displays a *Disabled Person's Parking Permit* issued by the Social Planning and Research Council of BC (SPARC BC) or another organization operating on behalf of SPARC BC or a permit of a similar nature issued by another jurisdiction;
- (b) the *vehicle* displaying a *Disabled Person's Parking Permit* is operated by or transporting a *disabled person*;
- (c) the time limit for the *vehicle* legally parked in the *disabled person's parking* space has not expired.

Amended
by 3101.03

43.3 A *vehicle* displaying a valid *disabled employee parking exemption permit* may park against any *traffic control device* regulating parking time limits provided that:

- (a) the *vehicle* displaying the *disabled employee parking exemption permit* is operated by or transporting a *disabled person*;
- (b) the *vehicle* does not park for more than 8 hours in a 24-hour period; and
- (c) the parking space is not designated by the *City* for *disabled person's parking* or short term 15-minute parking

44. Paid Parking Permits

- 44.1. A *person* must not *park* any *vehicle* in a *City* operated paid *parking* lot or space without first obtaining the required *paid parking permit* or *spitter ticket*.
- 44.2. *Paid Parking Permit* and *spitter ticket* fees must be paid in accordance with the *City's Fees and Charges Bylaw*.
- 44.3. All *paid parking permits* or *spitter tickets* must be placed face-up on the *vehicle* dashboard and be visible through the *vehicle* front windshield.

45. Parallel Parking

- 45.1. On those *roadways* that have been marked or signed for *parallel parking* by *traffic control devices*, the operator of a *vehicle* must:
 - (a) not *park* any *vehicle* so that any part of the *vehicle* or any load thereon extends into another *parking* space, except for a *vehicle* towing a *recreational vehicle*;
 - (b) not *park* any *vehicle* over 30 (approximately 12 inches) centimetres from any *curb*.

46. Residential Parking Permits

- 46.1. Residential Parking Permits
 - (a) are valid for *parking* a *vehicle* in excess of the posted time limit on *streets* within one block of the *street* name shown on the *Residential Parking Permit*;
 - (b) issued by the *City* must not be resold;
 - (c) must be in a form prescribed by the *City*;
 - (d) fees must be paid in accordance with the *City's Fees and Charges Bylaw*;
 - (e) expire at midnight one year to the day of being first issued.

47. Stopping, Standing, and Parking Vehicles

- 47.1. Except to comply with the directions of a *Bylaw Enforcement Officer*, *Peace Officer*, *RCMP Officer* or other *person* duly authorized by the *City* or otherwise provided in this bylaw, a *person* must not stop, stand or *park* a *vehicle*, *trailer*, *camper*, *recreational vehicle* or combination thereof:
 - (a) on a *sidewalk* or *boulevard*;
 - (b) against any *traffic control device* regulating *parking* time limits unless displaying a valid *disabled employee parking exemption permit*;
 - (c) against any *traffic control device* regulating *Micro Car parking* spaces;
 - (d) in any *parking* space designated for *disabled person's vehicle parking* unless:
 - i. the *vehicle* displays a lawful *Disabled Person's Parking Permit* issued by the Social Planning and Research Council of BC (SPARC BC) or

Amended
by 3101.03

- another organization operating on behalf of SPARC BC or a permit of a similar nature issued by another jurisdiction; and
- ii. the *vehicle* displaying a *Disabled Person's Parking Permit* is operated by or transporting a *disabled person*;
- (e) over 30 centimetres from any *curb*;
 - (f) outside of the painted lines indicating the *parallel parking* space, except for a *vehicle* towing a *recreational vehicle*;
 - (g) outside of the painted lines indicating an *angle parking* space;
 - (h) on any *curb* painted yellow;
 - (i) in a *commercial vehicle loading zone*, designated by a *traffic control device*, without a valid commercial decal or plate;
 - (j) in a *commercial vehicle loading zone* by a *commercial vehicle* for longer than the posted time limit;
 - (k) in front of any Fire Hall so as to block the *street* access from fire trucks and equipment;
 - (l) at any place in contravention of a *traffic control device* prohibiting stopping or *parking*;
 - (m) on a designated *cycle path* on any *highway*;
 - (n) in any *City block* controlled by a *parking* time limit regulation, cause that *vehicle* to be returned to the same block within a 10-hour time period after the expiration of the original permitted time limit;
 - (o) on any *highway* between the hours of 9:00 p.m. (21:00 hours) and 6:00 a.m. (06:00 hours) if the *vehicle, trailer, camper* or combination thereof, weighs in excess of 4,500 kg GVW or in excess of 8 metres (approximately 26.3 feet) in length;
 - (p) facing oncoming *traffic*;
 - (q) in front of a public or private driveway;
 - (r) in or on any *lane*, except:
 - i. for *commercial vehicles* engaged in loading or unloading of materials for a period of time not exceeding 30 minutes and provided the *commercial vehicle* is so placed to leave 3 metres of clear *roadway*; or
 - ii. where *parking* is permitted by a *traffic control device*;
 - (s) within 5.0 metres of a fire hydrant measured from a point on the curb or edge of the highway that is closest to the fire hydrant, or a greater or lesser distance, if otherwise marked on the curb;
 - (t) in such a manner as to obstruct the visibility of any *traffic control device*;
 - (u) on any *highway* or *roadway* for a continuous period exceeding 24 hours;
 - (v) on either side of a *vehicle* already stopped or *parked* at the edge or *curb* of

Amended by
3101.02

- a *highway*;
- (w) alongside or opposite a *highway* excavation or obstruction when stopping, *standing*, or *parking* obstructs *traffic*;
 - (x) in a *taxi zone*, as designated by a *traffic control device*, unless the *vehicle* is legally operating as a *taxi*;
 - (y) an unattended *taxi* in a *taxi zone* for longer than 10 minutes;
 - (z) in a *bus stop zone* unless the *vehicle* is a *bus* as defined in the bylaw;
-
- (aa) in any *City* operated *parking* lot or *parking* space operated where *traffic control devices* indicate that a *paid parking permit* or *spitter ticket* is required, without displaying a valid *paid parking permit* or *spitter ticket* for the said *parking* lot or *parking* space;
 - (bb) on any *highway* without displaying proper or valid number plates, including a valid validation decal;
 - (cc) on a *highway* in a residential area contrary to a *traffic control device* unless such *person* has acquired an authorized *Residential Parking Permit*, and such permit being visible through the *vehicle* front windshield, and the *vehicle* being is parked in accordance with the conditions of the permit;
 - (dd) on any *highway* or public place having a gross *vehicle* weight (GVW) exceeding 4,500 kg or a length in excess of 8 metres for a consecutive period longer than five hours;
 - (ee) on a *highway* in such a manner as to obstruct or impede the normal flow of *traffic*;
 - (ff) *idling* in excess of one minute; with the exception of the following *vehicles*:
 - i. *vehicles idling* while passengers are embarking or disembarking;
 - ii. *vehicles idling* because of *traffic*, weather, an emergency, or mechanical difficulties over which the driver has no control;
 - iii. armoured *vehicle*, used to transport money or valuables, in which a *person* remains to guard the contents, in the course of the loading or unloading of such money or valuables;
 - iv. police, fire, ambulance, or other emergency *vehicle* in the course of the performance of police, fire, ambulance or other emergency duties including training activities, except where *idling* is substantially for the convenience of the operator of the *vehicle*;
 - v. a *vehicle* in the course of assistance in an emergency;
 - vi. *vehicles* engaged in the course of a *parade* or any other event authorized by *Council* or other delegated *person*;
 - vii. *vehicles* engaged in a mechanical test or maintenance procedure for which *idling* is required;

- viii. *vehicles* that must remain *idling* so as to power a heating or refrigeration system for the preservation of perishable cargo; and
 - ix. *vehicles* that must remain *idling* so as to power any tools or equipment necessary for or incidental to the provision of services by a municipality or a public utility.
- (gg) on any *highway* for the principal purpose of
- i. displaying a *vehicle* for sale;
 - ii. advertising, greasing, painting, wrecking, storing, or repairing a *vehicle*, except where repairs are necessitated by an emergency;
 - iii. displaying signs, or
 - iv. selling flowers, fruit, vegetables, sea foods or other commodities or articles, except as authorized by the Duncan Business Improvement Area Society or other such approved entity for the purpose of participating in the downtown Farmers' Market.

47.2. Where a *person* has parked a *vehicle* in a *parking* space in violation of the provisions of this bylaw, a separate offence shall be deemed to be committed at the expiry of each period of time during which the *vehicle* could have lawfully parked as indicated by the *parking* space markings or other *traffic control device*.

48. Trailer Left on Highway

48.1. A *person* must not leave, or permit to be left, a *camper*, *trailer* or *recreational vehicle* on a *highway* unless it is attached to a *vehicle* and in compliance with this and other *City* bylaws.

OFFENCES, PENALTIES, AND ENFORCEMENT

49. Damages to City Property

49.1. In addition to all other penalties herein provided, any *person* causing damage to any *boulevard*, *sidewalk*, *highway* or other *City* owned property, or any *person* being the *owner* or operator of any *vehicle*, which causes damage to any *boulevard*, *sidewalk*, *highway* or other *City* owned property, will be responsible for the cost of repairing such damage.

50. Offence and Penalty

50.1. Every person who violates a provision of this Bylaw, or who consents, allows or permits an act or thing to be done in violation of a provision of this Bylaw, or who neglects to or refrains from doing anything required to be done by a provision of this Bylaw, is guilty of an offence and is liable to the penalties imposed under this Bylaw or any other applicable Bylaw of the City, and is guilty of a separate offence each day that a violation continues to exist.

50.2. Any person who contravenes any of the provisions of this bylaw commits an offence punishable upon summary conviction and is liable to a fine of not less than \$2,000 and not more than \$10,000. Each day that an offence continues shall constitute a separate offence.

Amended by
3101.02

- 50.3. Any *person* who is guilty of obstructing a *City Bylaw Enforcement Officer, Peace Officer, the CAO, any Duncan Volunteer Fire Department member, City employee,* while performing his/her duties in relation to this bylaw, or other *City authorized person* is liable on summary conviction to a fine of not less than \$2,000.00, and not more than \$10,000, in addition to the costs of prosecution.
- 50.4. This bylaw may be enforced by the *City Bylaw Enforcement Officers, Peace Officers, the CAO, Royal Canadian Mounted Police Officers.*

51. Removal of Vehicles, Chattels and Human Powered Devices

- 51.1. Any:
- (a) *vehicle* or chattel unlawfully obstructing or unlawfully occupying any portion of a *highway, sidewalk, boulevard, City property, or public place;* or
 - (b) human powered device, including, but not limited to skateboards, roller skates, skis, inline skates, play scooter, cycles, or any other similar means of conveyance obstructing or unlawfully occupying any portion of a highway, sidewalk, boulevard, City property, or public place;

may on the order of a *Bylaw Enforcement Officer, Peace Officer, Fire Chief, Director of Corporate Services, CAO, Royal Canadian Mounted Police Officer, or their designates, or other City authorized person* be removed and taken to a place of impoundment as directed by the *person* issuing the order.

- 51.2. A *vehicle, chattel or human powered device* removed and impounded pursuant to this bylaw will not be released to its *owner* until the costs, fines and fees levied by the *City* and referenced in section 51.3 have been paid.

- 51.3. If a *vehicle, chattel or human powered device* removed and impounded pursuant to this bylaw is not claimed by its *owner* within thirty (30) days of the giving of the notice of impoundment of the *vehicle, chattel or human powered device* such *vehicle, chattel or human powered device* may be sold at public auction or by action in a court of competent jurisdiction, or otherwise, and any monies received on its sale shall be applied, firstly, to the cost of the sale; secondly, to the cost of the removal and impoundment; thirdly, to the recovery of any monies owed for any outstanding fines and fees in accordance with the *City's Fees and Charges Bylaw,* and finally, pay the surplus, if any, to the *person* entitled to possession if that *person's* identity and location are known.

- 51.4. The *Director of Finance* must apply the surplus referred to in section 51.3 in the following manner if the identity or location of the *person* entitled to the surplus in not known:

- (a) Hold the surplus for one year from the date of the auction or sale;
- (b) Pay the amount of the surplus into the *City's* General Revenue if the surplus is not claimed within one year from the date of the auction or sale.

52. Severability:

- 50.1 If any part, section, subsection, sentence, clause, or sub-clause, or phrase of this bylaw is for any reason held to be invalid by the decision of any court of competent jurisdiction, such decision shall not affect the validity of the remaining portions of this bylaw.

Amended by
3101.02

53. Repeal:

- 51.1 “Disabled Persons’ Parking Bylaw No. 1527, 1987” and amendments thereto, are hereby repealed.
- 51.2 “City of Duncan Anti-idling Bylaw No. 3004” and amendments thereto, are hereby repealed.
- 51.3 “Noxious Weeds Control Bylaw, 1976” and amendments thereto, are hereby repealed.
- 51.4 Bylaw 1127, 1976 cited as “Street Bylaw, 1976” and amendments thereto, are hereby repealed.

READ A FIRST TIME 2014-MAR-17
READ A SECOND TIME 2014-MAR-17
READ A THIRD TIME 2014-MAR-17.
ADOPTED 2014-APRIL-22.

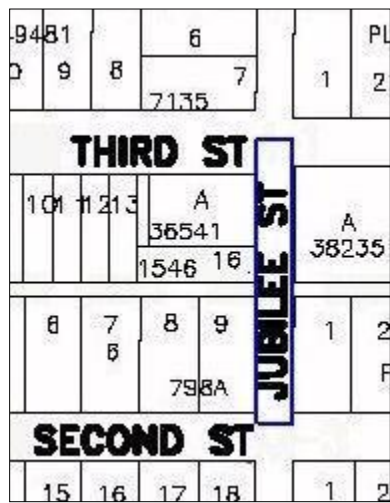
Mayor Phil Kent,

Karen Robertson,
Director of Corporate Services

Exhibit "A"

Streets and Parking Regulations Bylaw No. 3101, 2014

Example of a City Block



Amended
by 3101.03

Exhibit "B"
Streets and Parking Regulations Bylaw No. 3101
Downtown Core

